



CACHE VALLEY ELECTRIC
A TRADITION OF EXCELLENCE SINCE 1915

NEWSLETTER



Intermountain Health Primary Children's Hospital

LEHI, UT

323,352 SQ FT

INTERMOUNTAIN HEALTH OWNER

JACOBSEN CONSTRUCTION GENERAL CONTRACTOR

CVE DIVISIONS **ELECTRICAL CONSTRUCTION, TELEDATA, MULTIMEDIA**

PROJECT OVERVIEW

The new Lehi Primary Children's Hospital, scheduled to open in early 2024, will provide children with the very best in all aspects of pediatric care. The new hospital includes a full-service trauma center, 6 operating rooms, and 80 patient rooms.

CVE's electrical construction team worked on Lehi Primary Children's Hospital in a design assist approach. CVE's teledata team was a design assist trade partner on the hospital, adjacent clinic, central utility plant and site.

Every system in the hospital campus is equipped with the very best in pediatric care equipment and

technology. The operating rooms contain state-of-the-art systems and are equipped with Steris Hexavue Integration Systems—providing 4K visualization and seamless connections to endoscopes from any vendor.

ELECTRICAL CONSTRUCTION SCOPE OF WORK

- > BIM modeling
- > Temporary network, power, lighting
- > Power, lighting, lighting control, and fire alarm for: 80 patient rooms, 6 operating rooms, 2 trauma rooms, 2 CT scan rooms, 2 MRI rooms, 2 digital x-ray rooms, 2 fluoroscopy rooms, 2 ultrasound rooms, 1 IR/angio room



continued on page 2

Intermountain Health Primary Children's Lehi, continued from pg 1

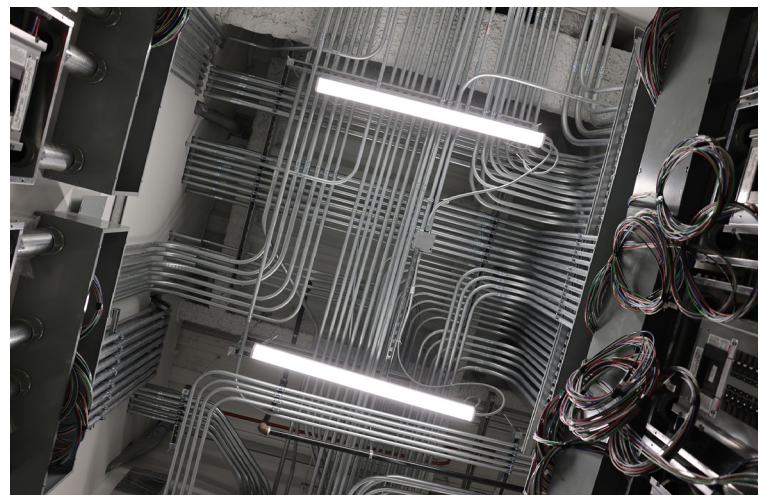
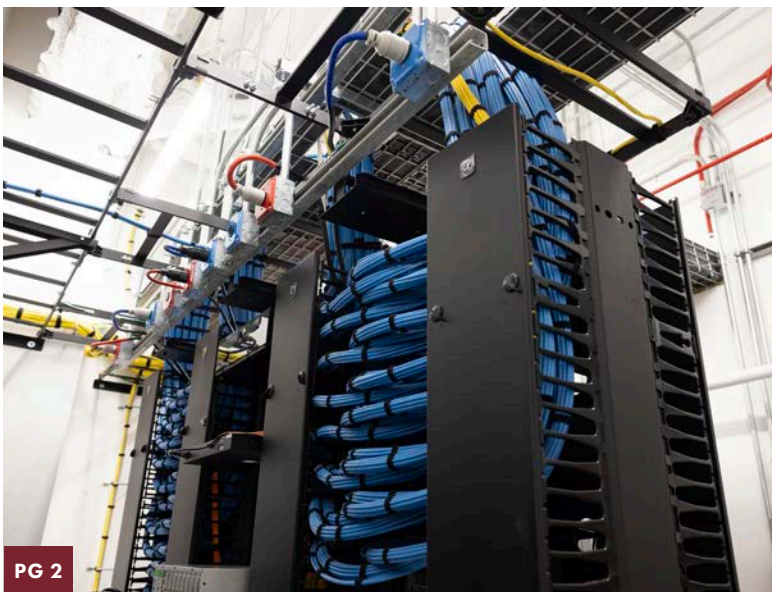


TELEDATA SCOPE OF WORK:

- > Hospital and clinic basket tray, J-hook system, fiber & copper backbone, operating rooms' fiber, voice & data infrastructure, patient monitoring, camera, and nurse call cabling.
- > Installation of owner-provided systems for the campus: 230 wireless access points, TOTGuard devices for child security, and Telehealth equipment.

AUDIOVISUAL/MULTIMEDIA SCOPE OF WORK:

- > Campus-wide networked paging system
- > HDMI connectivity in patient rooms and meeting spaces
- > Background noise system in key areas for speech privacy





UTA Ogden Express (OGX)

OGDEN, UT

FIVE MILE BUS RAPID TRANSIT ROUTE

UTAH TRANSIT AUTHORITY OWNER

STACY & WITBECK GENERAL CONTRACTOR

CVE DIVISIONS **SIGNAL & UTILITY, TELEDATA**

PROJECT OVERVIEW

Cache Valley Electric was selected by UTA and Stacy & Whitbeck to install the electrical infrastructure for the new Ogden Express Bus Rapid Transit line. The carefully selected and designed 5 mile route has upgraded stations and provides service for approximately 7,000 daily riders.

Bus Rapid Transit (BRT) combines the capacity and speed of light rail with the lower cost construction of an integrated bus system. The OGX (formerly route 603) gives riders a clean-air ride in an electric bus from the Ogden FrontRunner Station, through downtown, along dedicated bus lanes in the center of the road on Harrison Boulevard, through the Weber State University campus, and to McKay-Dee Hospital. Riders can now catch the OGX all-electric bus every 10-15 minutes on weekdays and 15-30 minutes on weekends.

SIGNAL & UTILITY SCOPE OF WORK

- > Installation of 16 new or partial signal systems, bus/signal priority system, bus station, lighting, electrical, monitoring, and controls
- > Installation of Rocky Mountain Power underground conduit and vaults
- > Installation of 2 ABB bus charging systems
- > Installation of multiple new street lights

TELEDATA SCOPE OF WORK

- > Installation and splicing of single mode fiber optic cable for UDOT, UTA, and Ogden City





ilani Hotel

RIDGEFIELD, WA

368,000 SQ FT

COWLITZ TRIBE OWNER

HOWARD S. WRIGHT CONSTRUCTION GENERAL CONTRACTOR

CVE DIVISIONS **PORTLAND TECHNOLOGY INTEGRATION, CVE TECHNOLOGIES GROUP**

PROJECT OVERVIEW

The new ilani Hotel is a beautiful blue 14-story, 300-suite hotel at the ilani Casino & Resort. CVE Portland's technology integration team brought the customer a complete design build that started in 2021 and completed in June 2023. CVE and CVE Technologies Group worked on the design and layout of all IT rooms, main server room, WiFi system, DAS, and security camera system.

SCOPE OF WORK

- > Installed all cabling infrastructure for speakers, AV touch panels, monitors, access control, and video surveillance terminals
- > Installed 24-strand fiber and RG-11 cabling from hotel Main Distribution Frame (MDF) to each Independent Distribution Frame (IDF)
- > Installed over 3000 cat6 cables to 189 hotel rooms 14 suites, main lobby, POS terminals, dining, kitchen, restaurants, bars, pool, and all camera locations
- > Installed 74 wireless access points throughout hotel lobby, back of house, all hotel corridors
- > Installed Emergency Responder Radio Communication System (ERRCS) DAS throughout hotel
- > Installed, tested, commissioned 50 ERRCS dual bandwidth antennas and fire alarm integration
- > Worked with customer to design and implement a mini data center network environment and network access/LAN switching for all floors of the hotel, including power-over-ethernet to power wireless access points, voice-over-IP phones, and surveillance cameras



Dixie Power Transmission

HURRICANE, UT – GREEN VALLEY, UT – MESQUITE , NV

46 MILES OF TRANSMISSION LINES

DIXIE POWER OWNER

CVE DIVISION **TRANSMISSION LINE & SUBSTATION**

PROJECT OVERVIEW

CVE's Transmission Line team has been working with Dixie Power over the last seven years to repair and replace 46 miles of transmission distribution lines. The upgraded lines will tie together a robust power grid from Hurricane, Utah to Green Valley, Utah to Mesquite, Nevada. It will facilitate more load capacity for the growing populations of southwestern Utah and southeastern Nevada.

The project was completed across challenging terrain with lines crossing over interstates and installation of poles on top of cliffs and in swampy areas. Most of the construction sites were also

monitored for environmental impact—particularly for the Desert Tortoise. Our crews successfully collaborated with Dixie Power, local businesses, residents, and government agencies to complete this important power delivery upgrade while maintaining a safe environment for all.

SCOPE OF WORK

- > Installation of new transmission and distribution circuits and upgraded existing transmission and distribution circuits.
- > Installations included caisson foundations, steel structures, wood poles, crossarms, insulators, conductors, and associated hardware.

Recently Awarded Projects

ELECTRICAL CONSTRUCTION

- Aligned Energy – West Jordan, UT
- Novva – West Jordan, UT
- Confidential – Corinne, UT
- Meta Eagle Mountain Data Center – Eagle Mountain, UT
- RMP District Campus Redevelopment – Salt Lake City, UT

- T-Mobile – Draper, UT
- SLC International Airport – Salt Lake City, UT
- ORE Designs – Woods Cross, UT
- Confidential – Brownsville, TX
- Novva – Las Vegas, NV
- Project Eagle – Santa Clara, CA

HEAVY INDUSTRIAL ELECTRICAL CONSTRUCTION

UTAH PROJECTS

- Blackstone Corporate Headquarters
- Northrup Grumman Promontory
- USU EVR Expansion
- USU South Campus Tunnel Extension and Demolition

Vulcraft – Phase 2 HV upgrade MISSISSIPPI PROJECT

- Aluminum Dynamics – Greenfield Aluminum facility
- ARKANSAS PROJECTS
- Hybar - Greenfield Rebar Mill
- BRS/MM2- 35Kv and 15Kv Distribution

Recently Awarded Projects continued from pg 5

HEAVY INDUSTRIAL ELECTRICAL CONSTRUCTION (CONT.)

TENNESSEE PROJECT

Sinova Silicon- Primary Power Distribution Ductbanks and Building Grounding

HAWAII ELECTRICAL CONSTRUCTION

Gather Federal Credit Union Kilauea - Kilauea, HI

Hawn Tel - Alakea Bus Duct Investigation - Honolulu, HI

Waikiki Banyan - Transformers - Honolulu, HI

Pacific Guardian Center FA Phase 9 - Honolulu, HI

C&S Wholesale - Trailer Plugs - Kapolei, HI

Hunt Electric - Argo Bldg Aiea, HI

Bank of Hawaii Lihue - Generator - Lihue, HI

KR2 CABINS 4 & 5 - Kilauea, HI

KR2 Tree House - Kilauea, HI

Pier 11 PV - Honolulu, HI

C-130J Facilities Upgrade Air Station Barbers Point - Honolulu, HI

Tunnels Node Remediation - Honolulu, HI

UH Waterhouse - Honolulu, HI

FMB AHU Chiller Work - Honolulu, HI

PMMC Biomed - Aiea, HI

371B JBPHH - Pearl Harbor, HI

Molokai General Hospital - Molokai, HI

HCC Building 8812 - Honolulu, HI

Maui College Ka'a'ike - Kahului, HI

Municipal Reference Center - Honolulu, HI

Hale Koa HVAC Modification - Honolulu, HI

Chinatown VAV - Honolulu, HI

Frank Fasi AHU-10 & AHU-11 - Honolulu, HI

Pali Momi VAV Upgrades - Aiea, HI

TRANSMISSION LINE & SUBSTATION

Mercer Substation Expansion - Meta UCO Substations - Eagle Mountain, UT

GE Idaho Midpoint Cap Bank - Jerome County, ID

Big River 2023/2024 Addition - Osceola, AR

Grantsville Convert to 138kV - Grantsville, UT

Jackalope Substation - Douglas, WY

St. George-Purgatory Flat Line Upgrade - St. George, UT

Provo City OPGW Install - Provo, UT

5600 S. Freeway Park Drive - SLC, UT

Northeast 13 Reliability Upgrade - SLC, UT

Grantsville Convert to 138kV - Grantsville, UT

Expulsion Fuse Jobs - South Oregon

Albany Transmission Pole Replacement - Albany, OR

Alderwood 115kV Tap - Alderwood, OR

Dry Lake Solar CO 138 Transmission Line - North Las Vegas, NV

New Nibley Circuit - Nibley, UT

Oakland 11 Reliability Upgrade - Oakland, UT

State Street 220S to 500E UDOT - Orem, UT

Yreka 5G76 NW Mt Shasta Tap Line Pt 4 - Yreka, CA

OTEC 69kV to 138kV HWY 203 - Burns, OR

Yreka Edgewood Fire Mitigation - Yreka, CA

Yreka Weed West Fire Mitigation - Yreka, CA

Albany Pole Repl Recond & Reliability - Yreka, CA

Yreka Hugo & Ski Park Fire Mitigation - Yreka, CA

Albany Corvallis OSU Van Buren - Albany, OR

SERVICE & SPECIALTY PROJECTS DIVISION

Deer Creek Dam Intake Project - Wasatch County, UT

LDS Bishops Central Storehouse Generator - Salt Lake City, UT

LDS Beehive Clothing Mill - Production Flow Improvements - Salt Lake City, UT

Danone Mega-Mix Building - West Jordan, UT

Eaton - UTTR Multiple Site UPS - Dugway, UT

Cardinal Health - Generator - Salt Lake City, UT

WestRock - Corrugator Upgrades - Spanish Fork, UT

MUSH Foods - Service Upgrade - Salt Lake City, UT

Northrop Grumman - Lighting Upgrades - Magna, UT

PCA - Corrugator Upgrades - Salt Lake City, UT

PCA Specialty Equipment Installation - Salt Lake City, UT

Phoenix Skyharbor Airport DAS Install - Phoenix, AZ

Morgan Stanely - E-Trade Integration - Sandy UT

Hydro - Cast House Expansion - Spanish Fork, UT

SIGNAL & UTILITY

DP-11B & 25 Terminal Redevelopment - SLC, UT

4700 S. Bangerter - WVC, UT

US-91; 3200 S. & 2000 W. - Nibley, UT

1100 West: 500 S. to 1300 S. - Woods Cross, UT

UTA Battery Electric Bus Charging Infrastructure

SLC Airport Taxiway E F1 F2 Reconstruction - SLC, UT

SLC Airport ARP CGMP 24 - SLC, UT

Juniper Crest Crosswalk & Mt Ogden Peak Dr. - Herriman, UT

U of U Solar RRFB's - SLC, UT

630 W. Center St. Improvements - Spanish Fork, UT

Natural Bridges National Monument - UT

800 N. 400 E. Traffic Signal - Spanish Fork, UT

Center St 800 E. Traffic Signal - Spanish Fork, UT

Herriman Main St. Reconstruction - Herriman, UT

SR-85; 13400 S. to Old Bingham Hwy - Herriman, UT

Adams Ave. Over I-84 Deck Replacement - Ogden, UT

300 S. 100 W. Logan Traffic Signal - Ogden, UT

300 S. 900 E., Provo Signal Upgrade - Provo, UT

US-89; Nicholls St. & 400 N. - Fruit Heights, UT

800 N. 800 E. - Spanish Fork, UT

UDOT 2023 Maintenance Contract; Install, Upgrade, Repair

Zollinger Park Shared Use Path/Bike Lanes - Providence, UT

Bangerter Hwy S. Interchanges 2700 W, 13400 S. 9800 S. - UT

UT BLM Access Road - Tooele Valley Airport, UT

COP Bore Constitution Blvd - WVC, UT

4700 S. Bangerter JVWCD Aqueduct Relocate - WVC, UT

200 E. 100 N. - Spanish Fork, UT

Flint Street, Eastbound Right Turn Pocke - Layton, UT

Utahraptor State Park - Moab, UT

USU EVR - Logan, UT

Layton City Signal Upgrades 2023 - Layton, UT

Layton City Gentile & 2200 W. Accident Repair - Layton, UT

700 S. 100 E. - Logan, UT

Fiber Pipe Fix for USU - Logan, UT

SR-68 (Redwood) & Commerce Dr. - Saratoga Springs, UT

I-84; I-15 to SR-26 Signs - Ogden, UT

Powder Point - Eden, UT

SR-30; SR-23 to 1400 W., Phase 1 - Logan, UT

Williams International Entry Way. - Ogden, UT

Pump House 9 Renovations - SLCIA, UT

UT Park City SR-248 - Park City, UT

HAFB Signal Wardleigh Rd & Georgia St. - Clearfield, UT

Layton 2700 W. - Layton, UT

US-89; Logan Canyon Brake Check & Intersection - Logan, UT

US-91; SR-165 to 1000 N. - Logan, UT

Billboard Relocation Project - Springville, UT

Center St. & 100 E. Signal - Logan, UT

7800 S. MVC Signal - West Jordan, UT

1200 W. 2600 S. - Nibley, UT

Nibley City St. Lighting Conduit - Nibley, UT

Guage Apt. RMP-UTA Relocate
300 North Main Fiber Box – Logan,
UT

Draper Pavement Maint. Arterial
Street Lights – Draper, UT

Ogden City Fiber Upgrade for BRT
Route – Ogden, UT

100 S. 100 W. Signal – Logan, UT

400 N. 100 W. Signal – Logan, UT

Granite Sump Pump, Ogden Yard –
Ogden, UT

AVTEC PHYSICAL SECURITY

AES

Polaris Collector, CA
Delta Winds, MS
Big Water, UT
Raceway PV, CA
Alamitos 2, CA
High Mesa PV,
Na Pua Makani, HI
West Wing / BESS, AZ

Bridger Coal – PACS System
Upgrade

Bridgerland Technical College – B&I
Hub, UT

Central Valley Water Reclamation
Thickening / Straining Bldg., UT

Chelan County PUD – Facility Barrier
Gates, WA

Dominion Energy:
Lindon Station, UT
Farmington Station, UT
Labarge Station, WY

Flexential:

Security Controls System
– Atlanta, GA
Security Controls System
– Richardson, TX
Security Controls Upgrade
– Portland, OR
Security Entrance Upgrades
– Denver, CO

Holly Frontier / Sinclair:
Muster Station Additions
Centralert System Upgrade

Metropolitan Water District of Salt
Lake & Sandy:
SCS System Upgrades
POMWTP – VSS Upgrades Phase 5

Northern Natural Gas – SOD
Security Project, OK

PacifiCorp
Jim Bridger Plant
– VSS Upgrades, UT
Rock Springs Service Center, WY

Salt Lake City Department of
Airports
Terminal Redevelopment Project
– DP22
DP11 – Hardstand Redevelopment
Park & Wait Area Upgrades

Traeger – Corporate Offices, UT

TELEDATA/MULTIMEDIA/ WIRELESS/DAS

TELEDATA

Cotopaxi Warehouse – WVC, UT
Utah Retirement – SLC, UT
Cyprus Credit Union – Millcreek, UT
Intermountain Health Hospital GI
Expansion – Layton, UT
Intermountain Health McKay Dee
Physicians Lounge – Ogden, UT

Salt Lake City VA EHRM
Infrastructure Upgrade – SLC, UT

eBay Data Center Upgrades – SLC,
UT

Aligned Energy – SLC, UT

Brigham Young University Athletics
Wifi Upgrade – Provo, UT

Morgan Stanley – SLC, UT

UVU Data Center Fiber – Provo, UT

Northrop Grumman – SLC, UT

U of U Red Zone Store – SLC, UT

U of U Urgent Care CT Remodel –
SLC, UT

U of U Sleep Center – SLC, UT

West High Wellness Center – SLC,
UT

ClearSky Rehabilitation Hospital –
Lecanto, FL

Westminster - Integrated Wellness
Center – SLC, UT

Barbers Point Facilities Upgrade –
Oahu, HI

Doug Smith Kia Dealership – Lindon,
UT

Bountiful HS Stadium – Bountiful,
UT

MULTIMEDIA

University of Utah Applied Sciences
Building – SLC, UT

Stacy & Witbeck Utah Operations &
Training Center – SLC, UT

Orem City Center – Orem, UT

Millcreek City Hall – Millcreek, UT

Mountainland Tech – Payson, UT

Grit Marketing HQ – Lehi, UT

Henriksen Butler HQ – SLC, UT

HAFB GBSB Software Sustainment
Center – Clearfield, UT

OTECH Electrical Program
Relocation – Ogden, UT

Bridgerland Health Sciences
Building – Brigham City, UT

WIRELESS/DAS

SLC Airport C-Band, AOC – Salt Lake
City, UT

VZW F1 Paddock – Las Vegas, NV

VZW LSV McCarran Airport – Las
Vegas, NV

VZW LSV Fountain Bleau – Las
Vegas, NV

VZW DIA CDAS CCC eSNAP –
Denver, CO

UCSD Hillcrest NH DAS – San Diego,
CA

Springville HS – Springville, UT

Southern Hills PS & NH DAS – Las
Vegas, NV

RLP Hotel ERRCS – Nashville, TN

CVE PORTLAND

Confidential Client 6MW Copper and
Fiber fit out – Structured Cabling,
Security – Hillsboro, OR

Confidential Client Multi Suite
Fiber fit out – Structured Cabling –
Hillsboro, OR

Hillsboro Civic Center – Structured
Cabling, Audio Video – Hillsboro, OR

State of Oregon CAMS II & III –
Structured Cabling, Audio Video –
Salem, OR

Astoria VA Hospital – Structured
Cabling – Astoria, OR

Providence Health Orchard House
WiFi – Structured Cabling – Mt.
Angel, OR

Populous Architects T.I. – Structured
Cabling, Audio Video – Portland, OR

Columbia Memorial Hospital PEDS
Clinic – Structured Cabling – Astoria,
OR

Greenbrier Centerpointe 1 T.I. –
Structured Cabling, Audio Video –
Lake Oswego, OR

OHSU RLSB 7 and 09A remodels –
Structured Cabling – Portland, OR

ACM Research T.I. – Structured
Cabling, Security – Hillsboro, OR

Unitus Community Credit Union
T.I. – Structured Cabling, Security –
Tigard, OR

Stoel Rives Law Offices AV upgrades
– Audio Video – Nationwide

Navex Global T.I. – Structured
Cabling, Audio Video – Lake
Oswego, OR

Frog Pond Elementary School –
Structured Cabling, Audio Video –
Wilsonville, OR

Nike West Campus AV Refresh –
Structured Cabling, Audio Video –
Beaverton, OR

Craig Stein Beverage – Structured
Cabling, Audio Video, Security –
Vancouver, WA

Battleground School District
Security upgrades – Security –
Battleground, WA

David Douglas School District
Security upgrades – Security –
Portland, OR

Providence Health PPMC IDF
upgrades – Structured Cabling –
Portland, OR

CVE TECHNOLOGIES GROUP

State of Utah

City of Henderson, NV

WebBank

City and County of Hawaii

Park City Municipal

Swire Coca Cola

Consumers Power Inc, OR

Intermountain Power

ARUP Labs

LOGAN CORPORATE OFFICE

875 North 1000 West
Logan, UT 84321
435-752-6405

SALT LAKE CITY OFFICE

1338 S. Gustin Road
Salt Lake City, UT 84104
801-908-6666

ARKANSAS OFFICE

5590 E. State Hwy. 137
Blytheville, AR 72315
870-824-6670

OREGON OFFICE

12550 SW 68th Ave.
Portland, OR 97223
503-431-6600

TEXAS OFFICE

4100 W. Royal Ln., Ste. 160
Irving, TX 75063
469-844-5730

HAWAII OFFICE

733 Bishop St., Ste 2170
Honolulu, HI 96813
808-354-0080

WWW.CVE.COM



CACHE VALLEY ELECTRIC

Cache Valley Electric
875 North 1000 West
Logan, UT 84321

PRST STD
U.S. POSTAGE
PAID
SLC, UT
PERMIT 6

Return Service
Requested

CVE Worldwide

CVE Technologies Group provides IT and network solutions for customers worldwide. To date, CVE Technologies Group has shipped equipment to **over 102 countries** across the globe. This complex logistics operation includes US-based design, staging, and equipment testing, followed by precise shipment and in-country installation.

