



**CACHE VALLEY ELECTRIC**  
A TRADITION OF EXCELLENCE SINCE 1915

# NEWSLETTER



## Zions Bancorporation Technology Center

**MIDVALE, UTAH**

**ZIONS BANCORPORATION** OWNER    **DEVELOPER** GARDNER GROUP

**OKLAND CONSTRUCTION, LAYTON ICS** GENERAL CONTRACTORS

CVE DIVISIONS **MULTIMEDIA, TELEDATA, AVTEC**

### PROJECT OVERVIEW

Cache Valley Electric's Multimedia, Teledata, and Avtec systems integration teams were proud to be trade partners for Zions Technology Center's state-of-the-art audiovisual, communications, and security systems.

CVE's Multimedia team worked with Layton Interior Construction Specialists (ICS) and Zions' design team to configure and install 118 huddle rooms, 32 conference rooms and training rooms. All rooms are equipped with Teams-native hardware with BYOD (bring your own device) capabilities.

Two large conference rooms have 163-inch LG DVLED (Direct View LED) displays with four cameras for Teams

meetings. They act as overflow to the all hands space which has two 220-inch air craft cable dropped projector screens with 21,000 lumen 4K laser projectors and its own Teams-native conference system.

A mixture of Crestron control and Crestron Teams hardware with Biamp audio DSPs are used in all meeting spaces to provide simple, turnkey solutions that are easy to use and simple to deploy.

Campus-wide Cambridge sound masking was installed for all common spaces and open office spaces to protect speech privacy and improve office acoustics.



## Zions Technology Campus, continued from pg 1



### MULTIMEDIA FEATURES

- > Interactive lobby wayfinding
- > Campus-wide digital signage

### TELEDATA SCOPE OF WORK

- > Horizontal cabling and fiber optic backbone
- > Wireless deployment
- > Data center

### AVTEC SCOPE OF WORK

- > Access Control System: building doors, vehicle gates integration, elevator integration, intercom, turnstiles installation and integration
- > CCTV Management System: exterior and interior cameras, video storage, network switches

## Sportsman's Warehouse

### RETAIL STORES NATIONWIDE

**SPORTSMAN'S WAREHOUSE** OWNER

CVE DIVISION **CVE TECHNOLOGIES GROUP**

### PROJECT OVERVIEW

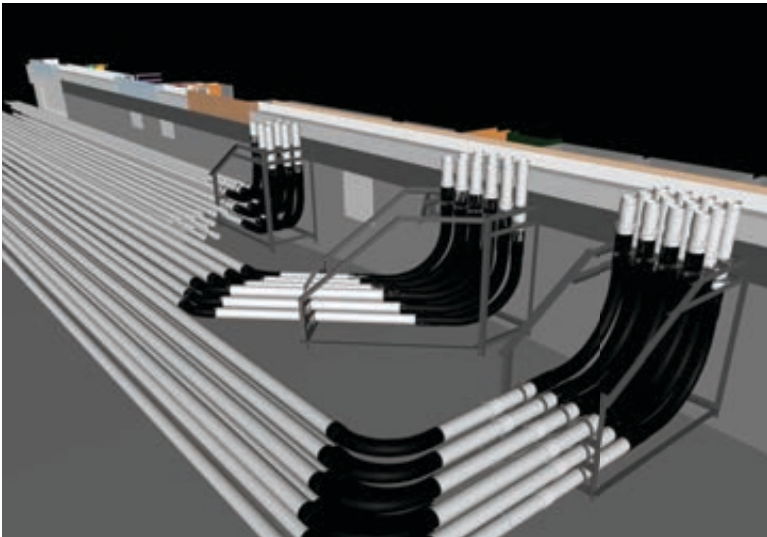
Throughout the last ten years, outdoor sporting goods retailer Sportsman's Warehouse has trusted and turned to CVE Technologies Group to provide networking equipment for their corporate offices and retail stores.

Sportsman's Warehouse is an outdoor specialty retailer focused on meeting the needs of the seasoned outdoor veteran, the first-time participant, and everyone in between. They currently operate 132 stores across the US and seek to expand their outdoor retail footprint with the addition of between thirteen



and eighteen new stores during the year. This would be the highest number of new stores opened in a single year.

CVE Technologies Group will provide networking equipment and services to the new Sportsman's Warehouse stores. Sportsman's is also looking to fortify the company's disaster recovery capabilities. CVE Technologies Group and additional CVE divisions are looking forward to supporting and enhancing Sportsman's IT infrastructure plans.



# SLC International Airport North Concourse East

## SALT LAKE CITY, UTAH

**370,221** SQ FT

**SALT LAKE CITY DEPT. OF AIRPORTS** OWNER

**HOLDER/BIG-D JOINT VENTURE** GENERAL CONTRACTOR

CVE DIVISIONS **ELECTRICAL CONSTRUCTION, AVTEC, TELEDATA, DAS, SIGNAL & UTILITY**

### PROJECT OVERVIEW

In December 2021, Holder/Big-D Joint Venture awarded CVE Salt Lake International Airport's North Concourse East Project. This 370,221 square foot expansion consists of eight gates, with the first four gates expected to open in October 2024 and the remaining four gates to open about one year later.

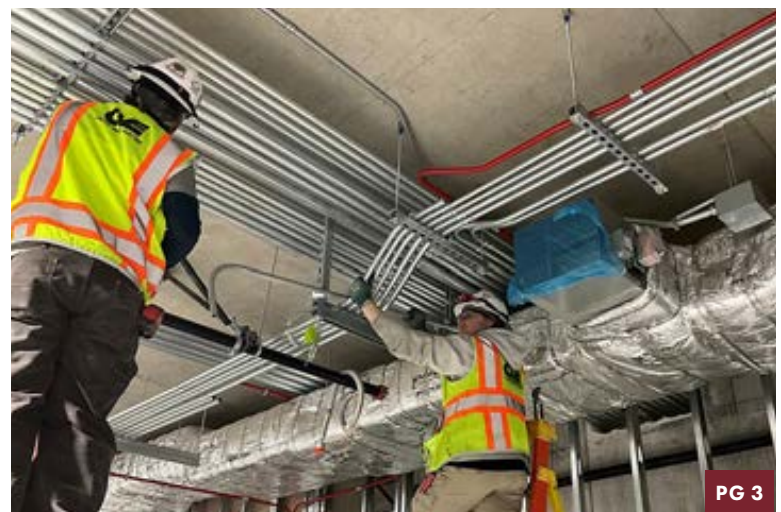
CVE's Electrical Construction, Signal & Utility, Avtec Physical Security, DAS, and Teledata teams are all working collaboratively to complete many of the systems for SLC North Concourse East.

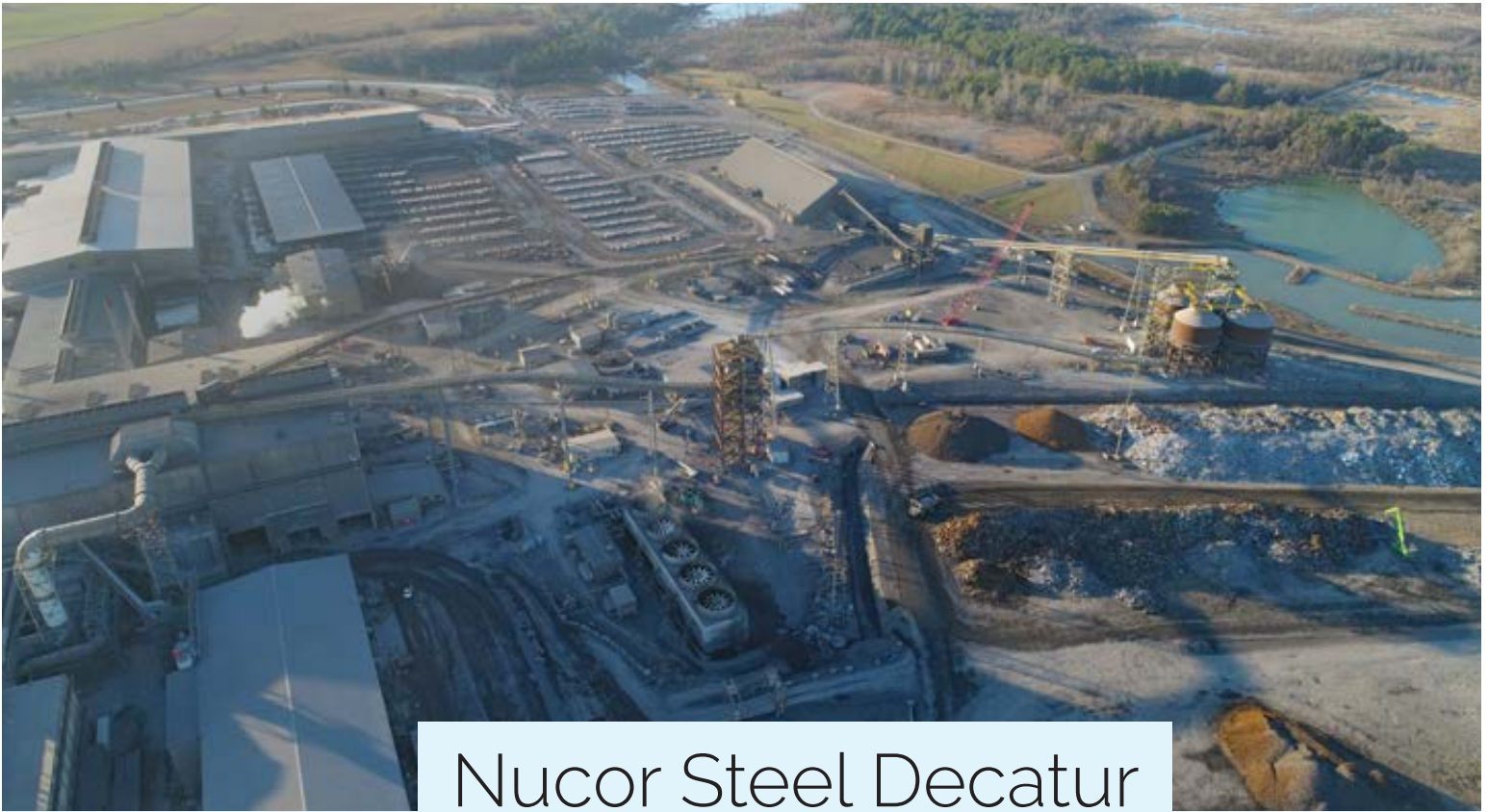
Early planning and modeling with CVE's BIM/VDC team began in January 2022. The first underground activities started in May 2022, and with the help of CVE's Prefab and Signal & Utility teams, on-site crews prefabricated and installed the underground assemblies and H frames.

In June 2022, work began on the airport's new 106,000 square foot central tunnel that will connect the South Concourse to the North Concourse under the airplane taxiway. The tunnel was a big undertaking for the CVE design team, as they designed a lighting ceiling grid

system that spans the entire length of the tunnel. The grid comprises of 555 four by six foot blue light fixtures used for the lighting effects on the tunnel's art installation, "River Tunnel", by artist Gordon Huether.

The electrical construction team currently has approximately 65 employees supporting the design and construction of the project, with labor peaking at about 80 employees in late summer 2023.





# Nucor Steel Decatur

## DECATUR, AL

**NUCOR STEEL** OWNER & GENERAL CONTRACTOR

CVE DIVISION **HEAVY INDUSTRIAL ELECTRICAL CONSTRUCTION**

### PROJECT OVERVIEW

Cache Valley Electric recently completed its scope of work on a large conveyor system that is being built to unload DRI (Direct Reduced Iron) pellets from river barges to the electric arc furnace at Nucor Steel Decatur, Alabama.

DRI is a supplement that is used in conjunction with scrap steel, melted in the electric arc furnace, and eventually becomes a finished product.

The DRI is manufactured at Nucor facilities in Trinidad and Louisiana. From these facilities it is shipped by barge up the Mississippi and Tennessee Rivers to its final destination in Decatur, Alabama.

This conveyor system is over 3,000 feet in length and reaches a height of 158 feet above ground. To enable the conveyor system to make the numerous and complex transfers of DRI, it requires an extensive control system as well as significant electrical power demands.

Over 24,000 manhours of electrical work were required to complete this project.





# Meta Los Lunas Data Center

## LOS LUNAS, NM

**2,444,690** SQ FT    **META** OWNER

**FORTIS** GENERAL CONTRACTOR

CVE DIVISION    **ELECTRICAL CONSTRUCTION**

### PROJECT OVERVIEW

Cache Valley Electric has been an electrical construction trade partner at Meta Los Lunas, New Mexico Data Center campus since 2018. The first section of the campus consists of 6 buildings designed in 3 separate "H" footprints, and was completed in 2021. CVE is currently working on the campus' second phase of construction.

CVE's scope of work has included the low voltage Building Management System which comprised of the installation of over one million feet of conduit. CVE's electricians pulled 4.2 million feet of cabling, and close to 160,000 terminations.

The field leadership team had to manage a fast-paced construction completion, manpower constraints, and scheduled finish dates in multiple areas and buildings. Our performance as a team has led to continued successful electrical projects for this customer.



### SCOPE OF WORK

- > 3D BIM modeling and coordination
- > Utilized CVE's Salt Lake City Prefab team and facility for panel and device builds
- > Documented checklists for QA/QC on every termination and device
- > 3rd party audits for install, quality, and accuracy from owner
- > Complete turnkey PLC controls and monitoring system

# Recently Awarded Projects

## ELECTRICAL CONSTRUCTION

Aligned Energy - West Jordan, UT  
 DataBank - Denver, CO  
 DataBank Granite Point - Bluffdale, UT  
 Meta Eagle Mountain - Eagle Mountain, UT  
 Meta Los Lunas - Los Lunas, NM  
 Novva Quasar - NV  
 Novva - West Jordan, UT  
 Niagra Bottling - Brigham City, UT  
 SpaceX - Cape Canaveral, FL  
 Uintah County Jail - Vernal, UT  
 Central Utah Correctional Facility - Gunnison, UT  
 Purgatory Correctional Facility - Hurricane, UT  
 Colmena Group - SLC, UT  
 Goldman Sachs - SLC, UT  
 Mortenson Construction Office - SLC, UT  
 Hyatt Regency Downtown ongoing projects - SLC, UT  
 Utah State Correctional Facility ongoing projects - SLC, UT  
 Engel Electric BIM Services

## HEAVY INDUSTRIAL ELECTRICAL CONSTRUCTION

### UTAH PROJECTS

Miller Hangar Salt Lake Airport  
 CVTD Administration, Operations, and Maintenance Facility North Logan, Utah  
 Northrup Grumman Promontory, UT - Building M-348  
 - Misc. Pojects  
 Northrup Grumman Clearfield, UT - Network Upgrade  
 JBS Hyrum, UT  
 - Hot Box Controls  
 - Brine System  
 - PFC  
 - Total Plant Fixture Change  
 - Ongoing Projects  
 Utah State University - Logan, UT - Medium Voltage Upgrades  
 Thermo Fisher Scientific - Logan, UT

### ARKANSAS PROJECTS

Steel Technologies Oscillator Feed  
 JMS Slitter Line

Big River Steel - MM2 35kv Ductbanks for Power Distribution  
 Big River Steel - MM2 Meltshop  
 Big River Steel - MM2 Water Treatment  
 Big River Steel - MM2 Admin Building  
 Big River Steel - MM2 Employee Services Building

### NORTH CAROLINA PROJECT

Perdue Farms - Maintenance

## HAWAII ELECTRICAL CONSTRUCTION

Paradise Beverage WAPS  
 Joint Base Pearl Harbor-Hickam Bldg 371 Renovation  
 AMC VFD Relocations  
 Grand Hyatt Kauai-Honolulu Coffee  
 Pier 10D PV System  
 KR2 Storm Shelter  
 University of Hawaii Waterhouse Controls

## TRANSMISSION LINE & SUBSTATION

Roseburg Tesla Project - Roseburg, OR  
 Expulsion Fuse Jobs - OR  
 Sunroc Corporation - Washington, UT  
 Grants Pass Redwood Fire Mitigation - Grants Pass, OR  
 Grants Pass Merlin Fire Mitigation - Grants Pass OR  
 Bend & K Falls Footer Repair - Bend, OR  
 Eden 11 & 12 Capital Bundle - Eden, UT  
 Klamath to Snow Goose - Klamath Falls, OR  
 Albany Washington Way Phase II - Albany, OR  
 Lincoln City Fiber Ring - Lincoln, OR  
 Park City FHCA Replacements - Park City, UT  
 Clover Substation - Mona, UT  
 Coyote Substation - Bonanza, UT  
 Little Snake Substation - Moffat County, CO  
 Aeolus Substation - Medicine Bow, WY

Big River Steel - Osceola, AR  
 Cedar Creek Wind - Shelley, ID  
 Daniels Substation - Heber, UT  
 Steel Solar - Plymouth, UT  
 Gateway South - Mona, UT  
 GE NextEra Clearwater Wind Series - Forsyth, MT

## SERVICE & SPECIALTY PROJECTS DIVISION

Hill Air Force Base Bldg. 260 Boiler Upgrade - Clearfield, UT  
 PCA Specialty Building - Salt Lake City, UT  
 Walgreens Pharmacy Distribution Center- West Jordan, UT  
 Huntsman Cancer Institute Transfer Switch Replacement- Salt Lake City, UT  
 LDS 5TC Security Upgrades - Salt Lake City, UT  
 Dannon - Brutus Project - West Jordan, UT  
 Discover UPS Dock Expansion - Salt Lake City, UT  
 Phoenix Convention Center DAS Installation - Phoenix, AZ

## SIGNAL & UTILITY

SLC Airport Taxiway P, Q, N & H3 Pavement Rehab - SLC, UT  
 Sycamore Glen Traffic Signal - Riverton, UT  
 Canyon View Traffic Signal - Mountain Green, UT  
 25th Street & Adams Development - Ogden, UT  
 Pole Canyon & Center Street Realign - Tooele, UT  
 Bingham Jct. Street Lighting Repair - Midvale, UT  
 UDOT ITS Maintenance Contract  
 1300 West & White Peach Dr. - South Jordan, UT  
 6880 West Road Extension - North Salt Lake, UT  
 Richfield Municipal Airport Apron - Richfield, UT  
 Bore 250 W 3600 So. - Nibley, UT  
 Hyde Park Wolf Pack Way - Hyde Park, UT  
 Spanish Fork Expressway Lane & US-6 - Spanish Fork, UT  
 JM Mechanical Bore Conduit - Logan, UT

US-89 Farmington South JV - Farmington, UT  
 USU Test Track - Logan, UT  
 SLC Airport DP 20 - SLC, UT  
 BD Medical SemaConnect Chargers - Sandy, UT  
 UTA First / Last Mile Amenities  
 Teton Pass VWS - Repairs - WY  
 West Wendover Downtown Development - West Wendover, NV  
 SLC Area Signal Detection Upgrade Phase II  
 Farmington Station Business Park - Farmington, UT  
 20th & Lincoln Traffic Signal - Ogden, UT  
 UTA First/Last Mile Provo Ped Bridge - Provo, UT  
 Jim Bridger Line Locating - WY  
 Kitty Hawk Dr & Airport Road Signal - Cedar City, UT  
 Loafer Mountain Parkway - Salem, UT  
 Intermountain Healthcare Heber Valley EV Chargers - Heber City, UT  
 WSU Birch Avenue Parking Lot - Ogden, UT  
 Wasatch Fleet Bldg Street Lights - WVC, UT  
 EV TriCounty Health Department - Vernal, UT  
 WVC 2022 Infill Project - WVC, UT  
 8600 South; 5600 W to 6000 W - West Jordan, UT  
 South Jordan Parkway Phase I - South Jordan, UT

## AVTEC PHYSICAL SECURITY

Bimbo Bakeries  
 - Video Surveillance Project, UT  
 Bridgerland Technical College  
 - Brigham City Campus Security  
 Central Valley Water Reclamation  
 - CC30B BNR Building Security  
 Chelan County PUD  
 - Hydro Facility Gate Barrier Arm Upgrades  
 - Rock Island Security Upgrades  
 Codale Electric  
 - Nampa, ID Security Project  
 Cushman Wakefield  
 - World Trade Center Bldg. Security UPG. UT  
 - 111 Main - Cynosure T.I.

Dominion Energy:  
 – M&R Facility, UT  
 – Fab Shop Facility, UT  
 – LaBarge Station, UT  
 – Farmington Station, UT  
 – North Temple M&R, UT

Flexential  
 – Security Controls System –  
 Atlanta, GA

Holly Frontier – Sinclair  
 – Deft Tower Camera Upgrade  
 Projects Building Security

Gardner Companies  
 – CHG Parking Structure Security,  
 UT

Kroger  
 – Logan Video Upgrades  
 – Green River Everseen Project

Metropolitan Water District of Salt  
 Lake & Sandy  
 – LCWTP – VSS Upgrades Phase 4  
 – SCS System Upgrades

MWP – Mountain West Pipeline  
 – Network Migration Project  
 – Fiddler Station Security  
 – Vernal Ops Center Security

Northrup Grumman  
 – Video Projects, UT

PacifiCorp  
 – Hunter Plant – Unit 3 Security  
 – Hunter Plant – Coal Yard Security  
 – Merwin Plant Security  
 – NTO – SOC System Upgrades  
 – WRC Security Expansion  
 – Wyodak – Muster Station Upgrades

Park City Municipal  
 – Marsac ACS Additions  
 – Quinns Maintenance Facility

S Power (AES)  
 – Big Sky Expansion – Security  
 Project  
 – Chevelon Butte – Security Project  
 – Luna Energy Storage – Security  
 Project

Salt Lake City Department of  
 Airports  
 – Car Rental Return VSS Upgrades  
 – Booth 10 VSS Upgrades

Salt Lake City Dept. of Public  
 Utilities  
 – NSLWR – LT2 Security Project

Sisecam  
 – ACS Additions Project, WY

SolutionReach  
 – Security/Access Control Project, UT

St. Johns Health  
 – Parking Gate Ops Project

Sturgeon Electric  
 – Facility Security – OR

Trager Grills  
 – Corporate Offices Security

Wilcox Health Care  
 – Eleeele Clinic Security  
 – Kauai Urgent Care Security

#### TELEDATA/MULTIMEDIA/ WIRELESS/DAS

##### TELEDATA

Amazon Delivery Station - Aiea, HI

Queens Molokai Fiber and AP  
 Installation - Honolulu, HI

SWIRE Coca Cola Cabling - Draper,  
 UT

University of Utah AIM-B Remodel  
 - SLC, UT

University of Utah NRH Robotics -  
 SLC, UT

Burton Lumber Rewire - SLC, UT

Morgan Stanley - SLC, UT

BYU Athletics Wifi Upgrade - Provo,  
 UT

Salt Lake City School District Office  
 Building - SLC, UT

Intermountain Healthcare Cedar City  
 Fiber Backbone - Cedar City, UT

Payson High School - Payson, UT

University of Utah Med ED - SLC, UT

Overstock Data Center - Midvale, UT

Kirkland and Ellis - SLC, UT

##### MULTIMEDIA

Zions Bank Downtown Meeting  
 Rooms Upgrades - SLC, UT

Harris Community Village  
 - Tooele, UT

Web Bank Boardroom - SLC, UT

Davis Technology College Training  
 Rooms - Kaysville, UT

University of Utah College of  
 Nursing Upgrades - SLC, UT

AG Reserves Office Relocation  
 - SLC, UT

Intermountain Healthcare Classic  
 Air - SLC, UT

SWIRE Coca Cola - Draper, UT

CHG Healthcare - Boca Raton, FL

Millcreek City Hall - Millcreek, UT

##### WIRELESS/DAS

Wild Horse Pass Casino & Resort  
 – AZ

Vee Quiva Casino & Resort – AZ

Phoenix Convention Center - AZ

Valley Wise Medical Center - AZ

University of California San Diego  
 Theatre District - CA

Gaylord Resort Chula Vista - CA

University of California San Diego  
 Hillcrest – CA

Denver International Airport DAS  
 Expansion – CO

Colorado School of Mines – CO

UCH Eastview Hospital – CO

VZW ESNAP Upgrades - CO

Billings Clinic – MT

St. James Hospital – MT

St. Luke's Boise – ID

St. Luke's Meridian – ID

Wesley Hospital – KS

Amazon Tucson – AZ

University of California San Diego  
 TDLLN – CA

China Lake – CA

Cache County Fairground – UT

University of Utah DESB & Prosperity  
 – UT

Utah State University Campus – UT

BYU Marriott Arena - UT

Utah State Capitol - UT

Compass Minerals Phase 3 - UT

Millcreek City Hall - UT

Union Pacific Hotel - UT

##### CVE PORTLAND

Confidential Client gMW fit out –  
 Hillsboro, OR – Structured Cabling,  
 Security

TriMet Elmonica & Ruby WiFi Project  
 – Portland, OR – Structured Cabling

Nike Serena Labs Project –  
 Beaverton, OR – Structured Cabling

Nike Retail Stores – Nationwide –  
 Structured Cabling

State of Oregon Capitol Project –  
 Salem, OR – Structured Cabling,  
 Audio Video

USGC – Portland, OR – Structured  
 Cabling, Security

Silverton Civic Center – Silverton, OR  
 – Structured Cabling, Audio Video

Astoria VA Clinic – Astoria, OR –  
 Structured Cabling

Thesis HQ Project – Portland, OR –  
 Audio Video, Security

Oregon College of Oriental Medicine  
 – Portland, OR – Security

City of Rainer – Rainer, OR – Security

SKB Auditorium – Wilsonville, OR –  
 Audio Video

Navex Global – Portland, OR – Audio  
 Video

PCC Mass Notification System  
 Project – Portland, OR – Audio Video

River Grove Elementary School –  
 Lake Oswego – Audio Video

PeaceHealth – SWMC Columbia  
 Emergency Department Project  
 – Vancouver, WA – Structured  
 Cabling, Audio Video

##### CVE TECHNOLOGIES GROUP

Adobe Systems Inc.

The Church of Jesus Christ of Latter-  
 day Saints

Intermountain Healthcare

Equinix Inc.

State of Utah

Eugene Water and Electric Board -  
 EWEB

Big River Steel

Salt Lake County

SOS International LLC

Sportsman's Warehouse

CHG Healthcare

Select Portfolio Servicing

Skywest

Utah Transit Authority

State of Utah Courts

Autoliv

Sunrun

Webflow, Inc.

**LOGAN CORPORATE OFFICE**

875 North 1000 West  
Logan, UT 84321  
435-752-6405

**SALT LAKE CITY OFFICE**

1338 S. Gustin Road  
Salt Lake City, UT 84104  
801-908-6666

**ARKANSAS OFFICE**

5590 E. State Hwy. 137  
Blytheville, AR 72315  
870-824-6670

**OREGON OFFICE**

12550 SW 68th Ave.  
Portland, OR 97223  
503-431-6600

**TEXAS OFFICE**

4100 W. Royal Ln., Ste. 160  
Irving, TX 75063  
469-844-5730

**HAWAII OFFICE**

733 Bishop St., Ste 2170  
Honolulu, HI 96813  
808-354-0080

[WWW.CVE.COM](http://WWW.CVE.COM)



**CACHE VALLEY ELECTRIC**

Cache Valley Electric  
875 North 1000 West  
Logan, UT 84321

PRST STD  
U.S. POSTAGE  
PAID  
SLC, UT  
PERMIT 6

Return Service  
Requested

# Thank You Jim Overright

Jim Overright, Project Executive for CVE's Electrical Construction Division, recently retired after 27 years of excellence. Jim always brought a knowledgeable, steady hand to the most challenging of work. He was critical to the success of notable CVE projects throughout Utah, including the 2002 Winter Olympics, Intermountain Medical Center, the LDS Tabernacle, and the newly opened Utah State Correctional Facility.

Jim operated with the utmost integrity and care for his work, customers and coworkers. His calm way of forecasting potential obstacles and finding the best solutions ensured work under his stewardship progressed smoothly. Jim's wisdom, knowledge and patience made him an ideal mentor to many—he created a rich legacy for others to succeed.

Congratulations to Jim!

