



CACHE VALLEY ELECTRIC
A TRADITION OF EXCELLENCE SINCE 1915

VOL 22 ISSUE 1 | SUMMER 2022

NEWSLETTER



DataBank

BLUFFDALE, UTAH

23 ACRES

50 MEGAWATTS

DATABANK OWNER

LAYTON CONSTRUCTION GENERAL CONTRACTOR

CVE DIVISIONS **ELECTRICAL CONSTRUCTION, TRANSMISSION LINE & SUBSTATION**

PROJECT OVERVIEW

Since 2018, CVE has had the opportunity to be an electrical trade partner for DataBank's Granite Point Campus construction projects. The 23-acre site includes four Tier II data centers (DataBank SLC 2, 3, 4, 5) and a 66 megawatt (MW) substation constructed by CVE's Transmission Line & Substation team. Currently, CVE is working with Layton Construction on the construction of SLC6—DataBank's new 32 megawatt 211,000 square foot Tier II data center.

SCOPE OF WORK—DATABANK SLC6

> 16 MW build out day one, 32 MW total

- > Installation of (8) 2750 kW generators, (1) 500 kW house generator
- > Installation of (8) 3000 kVA pads mount transformers and (1) 1500 kVA house transformer
- > Installation of (8) 4000 AMP switchboard lineups
- > Installation of (4) 1750 kVA UPS lineups and (4) 2000 kVA UPS lineups
- > Installation of (60) 300 kVA PDUs and (12) 750 kVA PDUs
- > Substation expansion including new 138 kV/12.5 kV bay, (2) 138 kV/12.5 kV transformers, (2) 138 kV circuit breakers, (11) 15.5 kV circuit breakers, (2) 145 kV switches, (80) 15.5 kV switches

continued on page 2



DataBank, continued from pg 1



DATABANK SLC5

Over 24 months, CVE provided automatic static switching equipment for a new 100,000 square foot facility. CVE successfully constructed the full electrical buildout of 6 UPS rooms including UPSs, medium voltage transformers and 3000 kW generators, house electrical system, two data halls and two-story office area. Scope of work included:

- > Fire alarm, Vesda system, and lightning protection
- > 12 MW block redundant topology
- > 15 kV medium voltage distribution loop
- > STSs (Static Transfer Switches) with source 2 being a reserve or catcher system allowing for functional redundancy

DATABANK SLC4

CVE coordinated and executed (3) redistribution outages on existing feeder in a live data center with a 2 MW power adder and annexed a "C" block to two data halls. Scope of work included:

- > Installation of (3) 2,750 kW generators
- > Installation of (2) 1,000 kW UPSs, (4) PDUs, and (8) RPPs to an existing facility



DATABANK SLC3

CVE coordinated and executed (3) redistribution outages on existing feeder in a live 425,000 foot data center with a 2 MW power adder and annexed a "C" block to two data halls. Scope of work included:

- > Installation of (1) 2,750 kW generator, new switchgear, new 500-ton cooling system

DATABANK SLC2

CVE coordinated and executed (4) redistribution outages on existing feeder in a live data center with a 2 MW power

adder and annexed a "C" block to one data hall. Scope of work included:

- > Installation of (1) 2,750 kW generator
- > Installation of (2) 1,000 kW UPSs, (8) PDUs, and (16) RPPs to an existing facility





CMC Steel Arizona 2

MESA, AZ

791,250 SQ FT

COMMERCIAL METALS COMPANY OWNER

CVE DIVISIONS **HEAVY INDUSTRIAL, TRANSMISSION LINE & SUBSTATION**

PROJECT OVERVIEW

CMC Steel Arizona 2 is a new mill constructed from the ground up and includes steel mill technology never before implemented in the US. This state-of-the-art MIDA QLP micro mill will be the first in the world capable of producing both steel rebar and merchant products with high yield strengths and maximum uptime. It will melt local scrap by the innovative Danieli Digimelter (Q-One, Zero Bucket, Q-Melt) and operate in endless casting-rolling mode with an output of 500,000 tons of long products, namely 350,000 tons of rebar and 150,000 tons of small merchant sections.

CVE's workforce will average 60 to 80 electricians with a peak of 160 to 180. CVE has also assisted in the design of the mill. Plant commissioning is scheduled for 2023.

SCOPE OF WORK

- > Design support for engineering and layout
- > Embedded conduit and site utilities from 13.8 kV distribution to 480 V

- > Installation of all distribution gear including: substation, medium voltage switch gear, 480 V switch gear, panels, PCR control houses and control cabinets
- > Plant process and network communications
- > All process, automation, control, and instrumentation installation
- > Substation including: (2) 34.5/13.8 kV transformers, (2) CCVTs, (1) control building





BioMérieux

SALT LAKE CITY, UTAH

272,000 SQ FT

BIOMERIEUX OWNER

OKLAND GENERAL CONTRACTOR

CVE DIVISIONS **MULTIMEDIA, TELEDATA, AVTEC, CVE TECHNOLOGIES GROUP**

PROJECT OVERVIEW

CVE's Multimedia group furnished and installed a mixture of productive collaboration rooms and integrated spaces across BioMérieux's new campus—from huddle spaces, medium and large conference rooms, to a large training room with two 165" 3x3 Barco video walls. A mixture of Crestron control and Biamp audio DSPs coupled with Cisco video conferencing endpoints was selected and installed to provide a simple, turnkey solution in each space that is easy to use and simple to deploy.

In addition, Multimedia furnished and installed a Cambridge sound masking system on each of the facility's four levels. This reduces office noise distractions, protects speech privacy, and improves office acoustics.

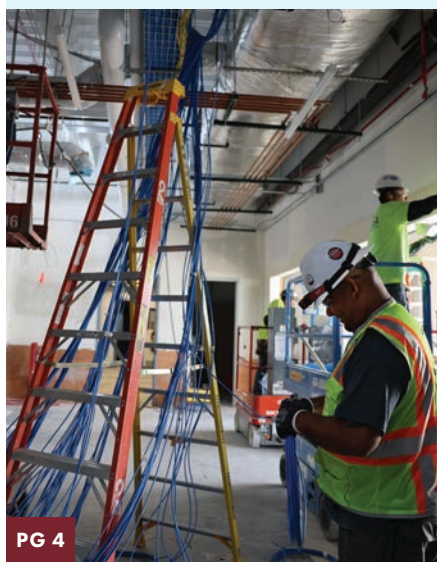
CVE's Teledata team built out eight communications closets connected to 3000+ Cat6A cables. They also installed a full single mode fiber optic backbone to each of the closets along

with a new connection to BioMérieux's existing manufacturing building.

CVE Technologies Group assisted in the design of a Cisco network and wireless solution that includes over 70 switches, 100 access points, and a pair of brand new wireless controllers to support current needs of the office and allow for future growth.

SCOPE OF WORK

- > Horizontal cabling and fiber optic backbone
- > Wireless deployment
- > Conference rooms / video conference systems, sound masking, direct view LED displays, room scheduling
- > Access Control System – building doors, vehicle gates integration, elevator integration, lobby turnstiles installation and integration
- > CCTV Management System – exterior and interior cameras, video storage, network switches





Johnson Creek Substation

BOONEVILLE, IOWA

161 kV

MIDAMERICAN ENERGY OWNER

CVE DIVISION **TRANSMISSION LINE & SUBSTATION**

PROJECT OVERVIEW

Cache Valley Electric's Transmission Line & Substation team recently constructed a new 161 kV substation in a double-breaker double-bus configuration with two 161 kV line terminals in Booneville, Iowa for MidAmerican Energy.

SCOPE OF WORK

- > Twelve 161 kV circuit breakers
- > Three 161/13.8 kV transformer terminals
- > Three 13.2 kV switchgear units
- > Relocation of an existing 161 kV line
- > Modifying and energizing two existing 161 kV lines



UTA Ogden Rapid Transit (OGX)

PROJECT OVERVIEW

CVE's Signal & Utility crews are working with Stacy & Witbeck Construction on the new UTA OGX electric bus rapid transit line—that will run from Ogden's FrontRunner Station to Weber State University and McKay Dee Hospital. CVE's scope of work includes: 2 electric bus charging stations; 142 lights on campus; 24 bus station canopies with power, lighting and communications; 6 miles of fiber optic conduit with 60,000 feet of fiber optic cable; signal work at 22 locations; relocation of 4,500 feet of dry utilities.



Recently Awarded Projects

ELECTRICAL CONSTRUCTION

AE Project Rover - West Jordan, UT
 AE Project Unisys - West Jordan, UT
 Confidential Client - Corinne, UT
 Big-D Office Remodel - SLC, UT
 Eagle Project - OSM Trestles - Preconstruction - Phoenix, AZ
 SLC North Concourse East DP19 - SLC, UT
 DB SLC3 CRAC Hardening - West Jordan, UT
 DKB 356 - Dekalb, IL
 SLCIA TRP DP-19A Special Systems Salt Lake City - SLC, UT
 Novva Electrical Systems 2C & 2D - West Jordan, UT
 eBay - South Jordan, UT
 Wilcox Service Hawaii - Honolulu, HI
 Natore Corp - Hotel Pool Lighting Conduit - SLC, UT
 Cache County Sheriffs Office - Logan, UT
 Thermo System - EAG - Eagle Mountain, UT
 SFH Flag Pole Lights - Spanish Fork, UT
 VCN-2 - Los Lunas, NM
 UCO Pre-Con - Eagle Mountain, UT
 Western Metals - Corinne, UT
 Wasatch County Jail PC Upgrade - Heber City, UT
 Interstate Brick - West Jordan, UT
 324 S. State L2&L3 - SLC, UT
 The Church of Jesus Christ of Latter Day Saints - SLC, UT
 AE Wagner 5B - West Jordan, UT
 HUEN Electric/Future Energy I-15 corridor - UT
 VCN-1 and 2 Admin Building BMS Install - Los Lunas, NM
 DEMI L5 Electrical - Corinne, UT
 SpaceX Starship Factory - Cape Canaveral, FL

LOGAN HEAVY INDUSTRIAL ELECTRICAL CONSTRUCTION

SDI Sinton, CGL2 & CCL2 - Sinton, TX
 Omnissource Power Distribution - Sinton, TX
 Bull Moose Tube Embeds and Grounding - Sinton, TX

SDI Heartland CGL & CCL - Terre Haute, IN
 Majestic Steel - Blytheville, AR
 USS/BRS NGO Cold Mill HV Ductbanks - Osceola, AR
 Plastics Resources, Power Distribution Upgrade - Logan UT
 Bridgerland Health Sciences Building Design/Build - Logan UT
 Northrup Grumman projects - Promontory, UT
 Northrup Grumman projects - Clearfield, UT
 JBS projects - Hyrum, UT
 Thermo Fisher projects - Logan, UT
 USU Swenson Park Project - Logan, UT
 USU 700 N. Tunnel Project - Logan, UT
 USU Softball Field - Logan, UT

HAWAII ELECTRICAL CONSTRUCTION

KMC Perm Gen - Lihue, HI
 Wilcox LV IT Rack in CUP - Lihue, HI
 JCI-Chinatown PD - Honolulu, HI
 JCI-Kalihi PD - Honolulu, HI
 JCI-Kahuku PD - Kahuku, HI
 JCI-Ala Moana McCoy - Honolulu, HI
 JCI HCC Building 8806 - Honolulu, HI
 JCI-Honolulu - Honolulu, HI
 Hawn Telcom Kahaluu Lighting Retrofit - Honolulu, HI
 Kapolei Marketplace Emergency Feeder Replacement - Kapolei, HI
 Nijiya Marketplace - Honolulu, HI
 Ala Moana Security Camera - Honolulu, HI
 Kona Hawaii LDS Temple B-Room AV Upgrade - Kona, HI
 Sand Island Waste Water Treatment Plant Phase 1A - Honolulu, HI
 Hale Koa Renovation - Honolulu, HI

TRANSMISSION LINE & SUBSTATION

Lassen Transmission - Mt. Shasta, CA
 Nebo-Delta 46kV Line Upgrade - Delta, UT
 Yreka Fire Mitigation #5 - Yreka, CA
 Dixie Power Transmission - St. George, UT

Horseshoe Solar - Delle, UT
 Rocket Solar Interconnect - Corinne, UT
 Bell Creek 120kV Capacitor Additions - Battle Mtn. NV
 Nibley Substation - Nibley, UT
 Primetals CMC Steel - Mesa, AZ
 Wassuk Switching Station - Yerrington, NV
 Elektron Solar / Craner Flat Substation - Delle, UT

SERVICE & SPECIALTY PROJECTS DIVISION

Westrock - EVOL Machine - Spanish Fork, UT
 Packaging Corporation of America - New Box Line - Salt Lake City, UT
 Oracle - Chaos Room - West Jordan, UT
 DIA - Concourse Expansion DAS Installation - Denver, CO
 Salt Lake Airport Expansion - Verizon DAS Installation - Salt Lake City, UT
 Danone - Reno Project - West Jordan, UT
 Intermountain Health Care - Multi-Site EV Chargers - Utah
 Northrup Grumman - New Equipment Room - Magna, UT
 Northrup Grumman - Multi-Building Lighting Upgrade - Magna, UT
 Northrup Grumman - WiFi Installation - Magna, UT
 Discover Financial - Office Refresh - West Valley City, UT
 Lamb Weston - Legacy Project - American Falls, ID
 Zipline - Trans Jordan Launch Facility - South Jordan, UT
 Cardinal Health - New Cooler & Freezer - West Valley City, UT

SIGNAL & UTILITY

1000 N. 400 E. Spanish Fork Signal Relocate - Spanish Fork, UT
 Northrup Grumman Lighting - Promontory, UT
 SLC Airport GA Zone 3 Corp. Hanger Site Dev. - SLC, UT
 SLC Airport No. Concourse East DP19 - SLC, UT
 Sutter Health WVC - West Valley City, UT

SR-67; W. Davis Corridor Construction - Signs - Davis County, UT
 Market St Village Bore - Saratoga Springs, UT
 100 W. Corridor Construction - Logan, UT
 Orem Switch Gear Replacement - Orem, UT
 BATC Vault Install and Trench - Logan, UT
 Northrup Kitting Dist. Vault & Trench - Promontory, UT
 I-15 Cable Barrier - Juab & Millard Counties, UT
 100 W. Bridge Work - Logan, UT
 Layton City Signal Upgrades 2022 - Layton, UT
 Park City 13 OH Conversion - Park City, UT
 American Fork Hospital 4" Pathway - American Fork, UT
 ACT Solar Fiber - Gunnison, UT
 2200 W. RMP - Layton, UT
 Amazon SLC 1 Bus Stop Light - SLC, UT
 1800 N. 600 W. - Logan, UT
 3500 S. 5600 W. Safe Sidewalk Extension - WVC, UT
 Provo City Airport C/O 5 & 6 - Provo, UT
 Home Goods Power - Taylorsville, UT
 SR-154; S. to Airport & Airport Ramps - SLC, UT
 Powder Mountain Overlook Phase 3 - Eden, UT
 201 Logistics Center at 7200 W. - SLC, UT
 100 E. 200 S. Bore - Logan, UT
 1000 W. 1000 N. Signal - Logan, UT
 1700 W. 2700 N. Signal - Pleasant View, UT
 SR-171; 2650 W. to Redwood Rd. - SLC, UT
 Parley's Trail 900 W. to Jordan River Signal - SLC, UT
 SLC North Cargo Apron - SLC, UT
 Clearfield Station TOD - Clearfield, UT
 Andersen RMP Bore - Lakeshore, UT
 Legacy Mountain Estates - Huntsville, UT
 Spanish Fork Santaquin Pipeline - Salem Reach 1 Project - Spanish Fork, UT

800 E.; Logan Middle Canal Crossing
- Logan, UT

Granite 5600 S. Design Build - Roy, UT
Lodestone & Utah Ave. Signal -
Tooele, UT

AVTEC PHYSICAL SECURITY

BioMérieux Administration Phase 2
- Security Controls - SLC, UT

Bridgerland Technical College
- Health Sciences Bldg. Security
- Logan, UT

Central Valley Water Reclamation
- Main Entrance Security Gate(s) -
UT

Chelan County PUD
- Service Center Facility - WA
- Chelan Powerhouse Upgrade - WA

Cushman Wakefield
- First Security Bldg. - Security
UPG. - UT
- Social Hall Bldg. - Security UPG. -
UT

Dominion Energy
- LNG Facility - UT
- DEU Center - UT
- Flyer Way - UT
- Eureka Station - UT
- Douglas St. - UT

Flexential
- Security Controls System
Hillsboro, OR
- Security Controls System
Plano, TX

ICU Medical - SLC VMS Upgrade
Project - UT

Kahala Beach Security Upgrades - HI

Malouf Linen Plant Expansion - UT

Metropolitan Water District of Salt
Lake & Sandy
- LCWTP - VSS Upgrades Phase 3

Miller Transportation Hanger Facility
- UT

PacifiCorp
- Wind Generation / Transmission -
Avian Project, WY
- Gadsby Plant - VSS Upgrades - UT
- Hunter Plant - VSS Upgrades - UT
- Huntington Plant - MCC Security -
UT
- Prime International - ACS System -
UT

Provo Airport - TSA Security

S*Power (AES)
- Pullman Station - Security Project
- Cement City Substation - Security
Project
- Letts Creek Substation - Security
Project
- McFarland Substation - Security
Project

- Cavalier Substation - Security
Project

Salt Lake City Department of
Airports
- Terminal Redevelopment Project -
DP19
- North Cargo Project

Salt Lake City Dept. of Public
Utilities
- Big Cottonwood WTP - West Gate
Project

TELEDATA/MULTIMEDIA/ WIRELESS/DAS

TELEDATA

Traeger - Salt Lake City, UT
Bridgerland Technical College -
Logan, UT

Domo - Salt Lake City, UT

BYU Arts - Provo, UT

SLC Public Libraries - Salt Lake City,
UT

Jordan District Campus Upgrades -
West Jordan, UT

Emery High School Remodel -
Castle Dale, UT

2022 Alpine E-Rate Projects - Alpine,
UT

U of U ACC Transplant 2nd Floor
Buildout - Salt Lake City, UT

South Summit High School - Kamas,
UT

U of U Film and Arts Building - Salt
Lake City, UT

U of U West Village - Salt Lake City,
UT

Provo City Lakeview Pkwy - Provo,
UT

IHC IMC Orthopedics Clinic
Expansion - Murray, UT

IHC IMC Central Laboratory
Expansion - Murray, UT

Wai Kai At Hosakalei - Aiea, HI

Turtle Bay Meeting Rooms - Kahuku,
HI

MULTIMEDIA

Turtle Bay Resort Audio Upgrade -
Kahuku, HI

California Bank and Trust Meeting
Room Upgrades - Irvine, CA

Utah First Credit Union
Headquarters Meeting Room
Upgrades - Salt Lake City, UT

Kona Hawaii Temple Upgrade -
Kona, HI

Traeger HQ - SLC, UT

Manti Temple Remodel - Manti, UT
Deseret Peak Temple - Tooele, UT

U of U Crocker Center Level 3 - SLC,
UT

Big-D Construction Main Office
Building - SLC, UT

Swire Coca-Cola - Draper, UT

Clark County Recorder's Office - Las
Vegas, NV

WCF Insurance - Sandy, UT

R1 RCM - Murray, UT

SLCC Juniper Building - Herriman, UT

WIRELESS/DAS

Rice Eccles South End Zone - SLC,
UT

Utah State Capitol - SLC, UT

SLC Airport Phase 2 for Verizon
Wireless - SLC, UT

SLC Airport 5G Upgrade - SLC, UT

St. Patrick's Hospital - Missoula, MT

St. James Hospital - Butte, MT

Cardinals Stadium Head End Rip
and Replace - Super Bowl 2023 -
Phoenix, AZ

CVE PORTLAND

Adobe Data Center Expansion -
Structured Cabling - Hillsboro, OR

Confidential Client 30MW fit out
- Structured Cabling, Security -
Hillsboro, OR

QTS DC 1 Data Center - Structured
Cabling - Hillsboro, OR

Nike Jerry Rice and Ken Griffey
Remodel - Structured Cabling -
Beaverton, OR

Nike Mia Hamm - Wireless Upgrade,
Structured Cabling - Beaverton, OR

Project Basie - Fire Alarm -
Woodburn, OR

Salem Public Works Building -
Structured Cabling - Salem, OR

Columbia Memorial Hospital Park
Building - Structured Cabling -
Astoria, OR

Marion County Health & Services
Building - Structured Cabling,
Security, Audio Video - Salem, OR

OHSU CHO - Structured Cabling -
Portland, OR

OHSU HMC Internal Medicine -
Structured Cabling - Portland, OR

Washington State University
Expansion - Structured Cabling -
Vancouver, WA

iLani Casino - Wireless Upgrade,
Structured Cabling - Ridgefield, WA

Aldrich Advisors - Structured
Cabling, Security, Audio Video -
Lake Oswego, OR

Victaulic T.I. - Structured Cabling,
Security, Audio Video - Tualatin, OR

PCC SE Campus - Structured
Cabling, Security - Portland, OR

Columbia Memorial Hospital
Security Upgrade - Astoria, OR

Catlin Gable Security Upgrade -
Portland, OR

Eastern Oregon University Security
Upgrade - La Grande, OR

Clackamas ESD Security Upgrade -
Clackamas, OR

CVE TECHNOLOGIES GROUP

Adobe Systems Inc.

State of Utah

AgReserves

The Church of Jesus Christ of Latter-
day Saints

SoFi

Ilani Resort & Casino

Verizon

Nu Skin International, Inc

America First Credit Union

Biofire Diagnostics

Bonneville International

Oregon Department of Justice

Big River Steel

Sunrun

Multnomah Education Service
District

Zagg

DHI

Backcountry

Park City Municipal

Sportsman's Warehouse

Cache School District

Huntsman Cancer Institute

Evergreen Public Schools

Salt Lake County

Weber School District

Tooele County Information
Technology

LOGAN CORPORATE OFFICE

875 North 1000 West
Logan, UT 84321
435-752-6405

SALT LAKE CITY OFFICE

1338 S. Gustin Road
Salt Lake City, UT 84104
801-908-6666

ARKANSAS OFFICE

5590 E. State Hwy. 137
Blytheville, AR 72315
870-824-6670

OREGON OFFICE

12550 SW 68th Ave.
Portland, OR 97223
503-431-6600

TEXAS OFFICE

4100 W. Royal Ln., Ste. 160
Irving, TX 75063
469-844-5730

HAWAII OFFICE

733 Bishop St., Ste 2170
Honolulu, HI 96813
808-354-0080

WWW.CVE.COM



CACHE VALLEY ELECTRIC

Cache Valley Electric
875 North 1000 West
Logan, UT 84321

PRST STD
U.S. POSTAGE
PAID
SLC, UT
PERMIT 6

Return Service
Requested

CVE Safety First and Always.

AGC OF UTAH DIAMOND 5-STAR ACHIEVEMENT OF SAFETY EXCELLENCE AWARD

At CVE, safety is our number one priority. On April 28th, 2022, Cache Valley Electric was presented the AGC of Utah's Diamond 5-Star Achievement of Safety Excellence Award—the highest level possible.

What does it take to earn this recognition? Companies are judged by two criteria. First, the company's OSHA Total Recordable Injury Rate must be 50% below the national average. Second, the company's EMOD Rating, which takes workers compensation expenses into account, must be below the industry standard of 1. Also, to achieve the 5-star rating, CVE had to demonstrate an additional level of measurable safety management—CVE's proprietary mobile CVE App catalogs and tracks all employees' safety certifications and helps monitor jobsite-specific safety requirements.



UTAH LABOR COMMISSION DEPUTY COMMISSIONER, CHRIS HILL | CVE
DIRECTOR OF SAFETY, CHRIS RONGSTAD | UTAH LABOR COMMISSION
COMMISSIONER, JACSON MAUGHAN