



**CACHE VALLEY ELECTRIC**  
A TRADITION OF EXCELLENCE SINCE 1915

VOL 21 ISSUE 2 | AUTUMN 2021

# NEWSLETTER



## Utah State Correctional Facility

**SALT LAKE CITY, UTAH**

**1.3 MILLION** SQ FT

**STATE OF UTAH** OWNER

**LAYTON-OKLAND JOINT VENTURE** GENERAL CONTRACTOR

CVE DIVISIONS **ELECTRICAL CONSTRUCTION, SIGNAL & UTILITY,  
MULTIMEDIA, TELEDATA, CVE IOT**

### PROJECT OVERVIEW

The new Utah State Correctional Facility west of the Salt Lake International Airport is being constructed to replace the existing facility currently located in Draper, Utah. Sitting on 170 total acres with housing for 3,600 inmates, the new facility reflects the latest concepts in correctional facility operations and design.

CVE commenced involvement with the project in spring 2017 in a design assist role with the project design

and management team. Construction of the first housing facility began in December 2019 with building construction scheduled to complete at the end of first quarter 2022 and site-wide commissioning continuing through the second quarter of 2022.

CVE's role has included a male maximum housing facility, 4 male general population buildings, site-wide infrastructure and shallow electric utility installations, security electronics installation in upwards



continued on page 2



## Utah State Correctional Facility, continued from pg 1



of 11 buildings and low voltage installations for campus-wide systems and cabling in all 31 permanent buildings of this small city.

### SCOPE OF WORK

#### Electrical Construction of 5 Detention Buildings—405,000 sq. ft. to House Approximately 2,100 Inmates

- > Power distribution systems to provide high level redundancy and back-up equipment to ensure continuous function of secure housing designs
- > 1,800,000 lineal feet of conduit for electrical systems and security electronics
- > 4,700,000 lineal feet of building wire for electrical systems
- > 40,000 manhours of virtual design including coordination and shop fabrication for utility chase components
- > All construction includes high security detention grade light fixtures and devices

#### Electrical Construction of Campus-Wide Medium Voltage Loop Power Systems and Site Utilities

- > Duct bank construction and distribution conduits for campus-wide communication systems
- > 152,000 lineal feet of medium voltage cabling creating circular redundant loop feeds in a 20,000-foot-long duct bank system
- > 41 medium voltage multi-way switches feeding 43 pad vault mounted medium voltage service entrance transformers
- > 41 medium voltage large power vaults and 44 large utility fiber communication vaults
- > General site lighting for 132-acre secure facility—22 high mast and 313 conventional poles and fixtures





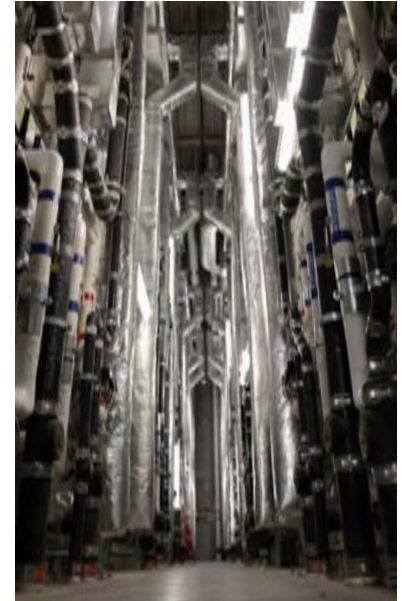
### Civil Construction of Building Underground Electrical Raceway Routing

- > Installation of medium voltage transformer and switch pad vaults with electrical yard construction on all campus buildings
- > Installation of 22 high mast footings
- > 313 light pole foundations



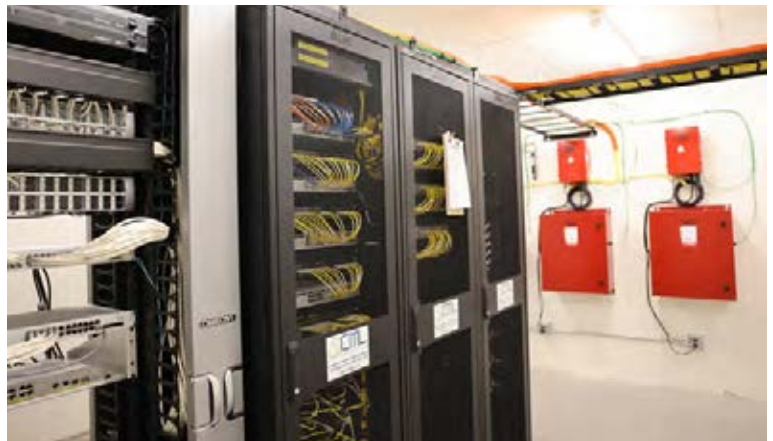
### Voice and Data Installations to Provide Fiber and Copper Backbone Around the Entire Campus

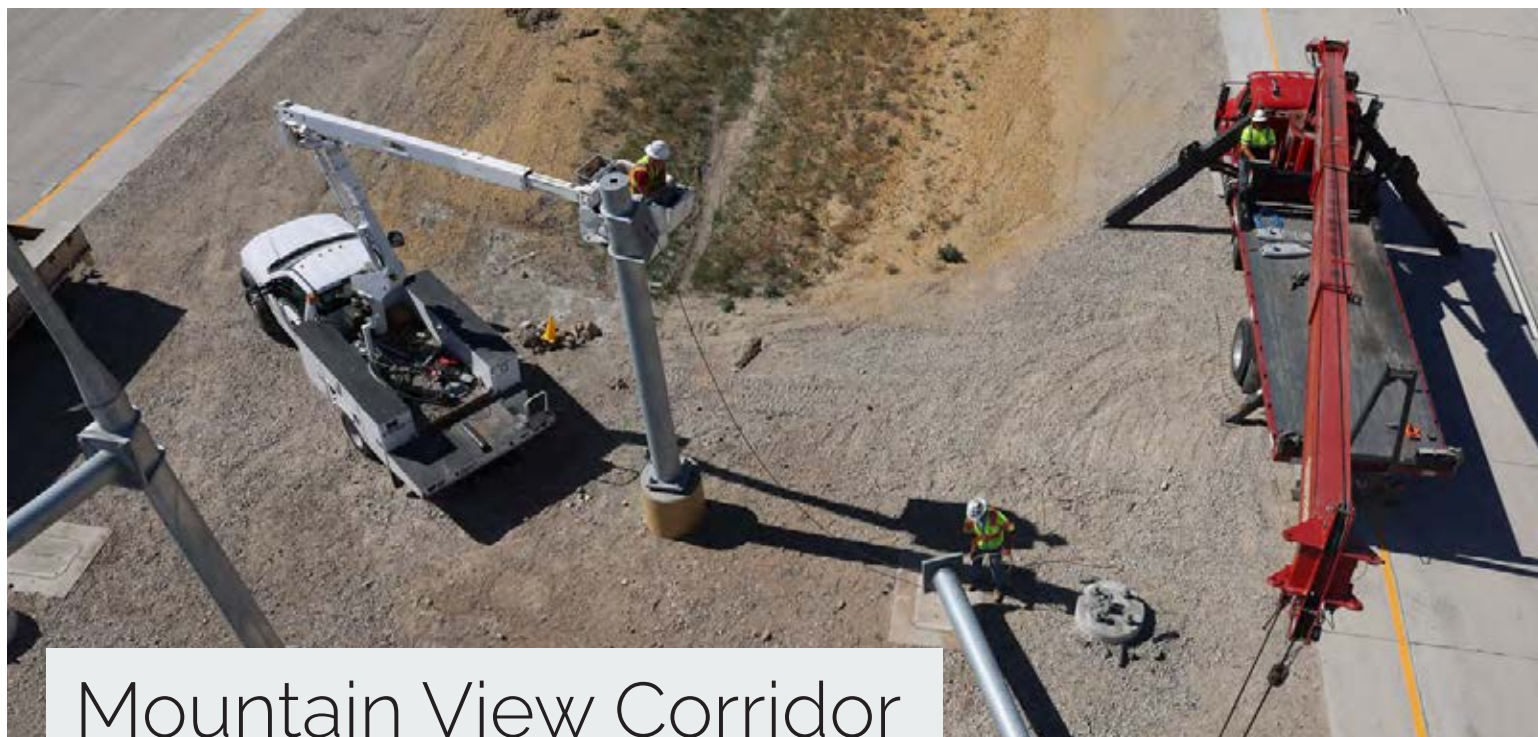
- > Horizontal cabling for voice, data, DAS, and video systems in all buildings
- > Centralized data center housing for systems servers
- > Video systems include signal acquisition and equipment for programming and distributing custom content throughout the campus
- > 850,000 lineal feet of Cat6A data cable
- > 500,000 lineal feet for fiber optic backbone
- > 145,000 lineal feet of copper backbone
- > 381,000 lineal feet of MATV cabling
- > 200,000 lineal feet of micro duct and inner duct
- > 17,200 fiber optic terminations
- > 9,200 Cat6 data jacks
- > 350 MATV display screens
- > 190 equipment racks
- > 4,238 TV drops for the entire campus distributed over fiber from one central point



### Security Electronics Installation

- > Active equipment, cabling, fiber optics, devices for secure door control and monitoring, video surveillance and recording, paging systems, intercoms, card access, lighting control interfaces and equipment for control rooms and officer stations
- > 1,400,000 lineal feet of multi-conductor control and systems cabling
- > Design coordination and installation of 24 equipment rooms
- > 1,100 intercom locations
- > 565 security cameras
- > 1,150 detention door locations with control and monitoring
- > 320 paging speakers
- > 400 card readers
- > 1,100 miscellaneous control and signaling devices





# Mountain View Corridor

## WEST VALLEY & SALT LAKE CITY, UT

4 MILES OF HIGHWAY

**UDOT** OWNER

**MVCC** GENERAL CONTRACTOR

CVE DIVISIONS **SIGNAL & UTILITY, TELEDATA**

### PROJECT OVERVIEW

Mountain View Corridor (MVC) is a phased planned freeway and trail system that will eventually run from I-80 in Salt Lake City to SR-73 near Lehi, Utah. This phase of the MVC was building a new two-lane highway from 4100 South to an interchange with the UT-201 freeway and stopping at California Avenue.

CVE's Signal & Utility group teamed with Kiewit and WW Clyde Companies from the beginning to assist in design of the signal and ATMS (Advanced Traffic Management System) systems as well as installation. CVE's scope began in March 2019 and wrapped up in July 2021. In addition to signals, lighting, and

ATMS, CVE installed dry utilities for the project. This consisted of Rocky Mountain Power infrastructure fiber optic pathways for fiber carriers and city betterment lighting for both West Valley City and Salt Lake City.

### SCOPE OF WORK

- > 14 new and reconstructed traffic signals
- > 19 bridge structures with lighting
- > 35,000 feet of new fiber optic conduits
- > 75,000 feet of new fiber optic cable
- > 4 variable message signs along with all the overhead structures and ground mounted signage







# Steel Dynamics, Inc. Flat Roll Steel Mill

**SINTON, TX**

**2,000,000** SQ FT

**STEEL DYNAMICS, INC.** OWNER

CVE DIVISIONS **HEAVY INDUSTRIAL, TELEDATA**

## PROJECT OVERVIEW

Steel Dynamics, Inc. is currently building a new steel mill located near Sinton, TX. This mill will consist of a melt shop, hot mill, and cold mill complex. The melt shop will feature two DC Electric Arc Furnaces and a caster capable of producing a 5.2-inch thick by 84-inch wide slab. The hot mill will have two tunnel furnaces, a 2-stand roughing mill, a 6-stand finishing mill, a laminar cooling section, two downcoilers, and a coil conveying system. The cold mill complex will include a pickling line, tandem cold mill, batch annealing process, galvanizing line, and a paint line.

This steel mill will offer various products—including some that are currently not available in the United States. Products produced at this facility will primarily serve the energy, automotive, construction, and appliance sectors.

CVE has been on-site working on multiple contracts since the first part of 2020. All of CVE's supervision, along with the workforce from Local 278, have done an excellent job of managing all aspects of this challenging and aggressive project to make it successful. It is expected that the majority of CVE's work will be complete by the end of 2021.



## SCOPE OF WORK

- > 35kv duct banks and power distribution
  - 280,000 feet (53 miles) of 6-inch PVC conduit
  - 480,000 feet (90 miles) of #500, 35kv cable
- > 5kv distribution duct banks
  - 170,000 feet (32 miles) of 2-inch and 4-inch PVC conduit
- > Cold Mill Complex embeds
  - 258,250 feet (49 miles) of 2-inch and 4-inch embedded conduits, with 2,852 stub ups
- > Continuous coating line (paint line) process installation
  - This project peaked with 120 people working six 10-hour shifts a week
- > Hot Mill process equipment electrical installation
  - This project will peak with 150 people working at six 10-hour shifts a week
- > Fiber optic backbone installation
  - Installation of over 40,000 feet of 576-strand singlemode fiber optic cable
- > E.C. Levy (slag handling) power distribution
- > EAF vault equipment
- > Various utility and lighting packages





# Moab 345kV Emergency Work

**MOAB AREA, UTAH**

**REPLACED 33 STRUCTURES ON A  
TRANSMISSION LINE**

**ROCKY MOUNTAIN POWER  
OWNER**

CVE DIVISION **TRANSMISSION LINE & SUBSTATION**

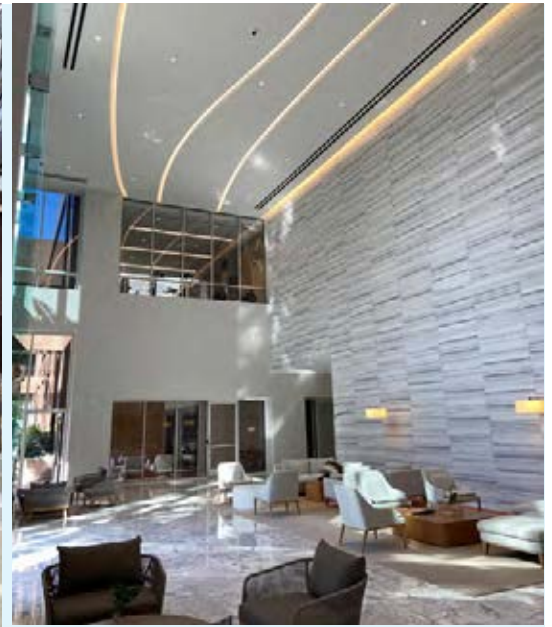
## PROJECT OVERVIEW

During a heavy rain and windstorm in the Moab, Utah area this summer, a 345,000-volt transmission line had a structure break. It caused a chain reaction that knocked down 33 structures on the Huntington-Pinto 345kV transmission line. This is one of Rocky Mountain Power's backbone transmission lines—critical to supporting the summer heat load in the Rocky Mountain region.

Approximately 15 crews (80+ tradespeople) were dispatched to make the repairs. Of the 15 crews, CVE sent 4 crews (20+ tradespeople) to work 16-hour days into the weekend to repair and energize the line.







# The Residences at Bishop Place

**OAHU, HI**

**240,000** SQ FT

**DOUGLAS EMMETT, INC.** OWNER

**UNLIMITED CONSTRUCTION SERVICES, INC.**  
GENERAL CONTRACTOR

CVE DIVISION **HAWAII ELECTRICAL CONSTRUCTION**

## PROJECT OVERVIEW

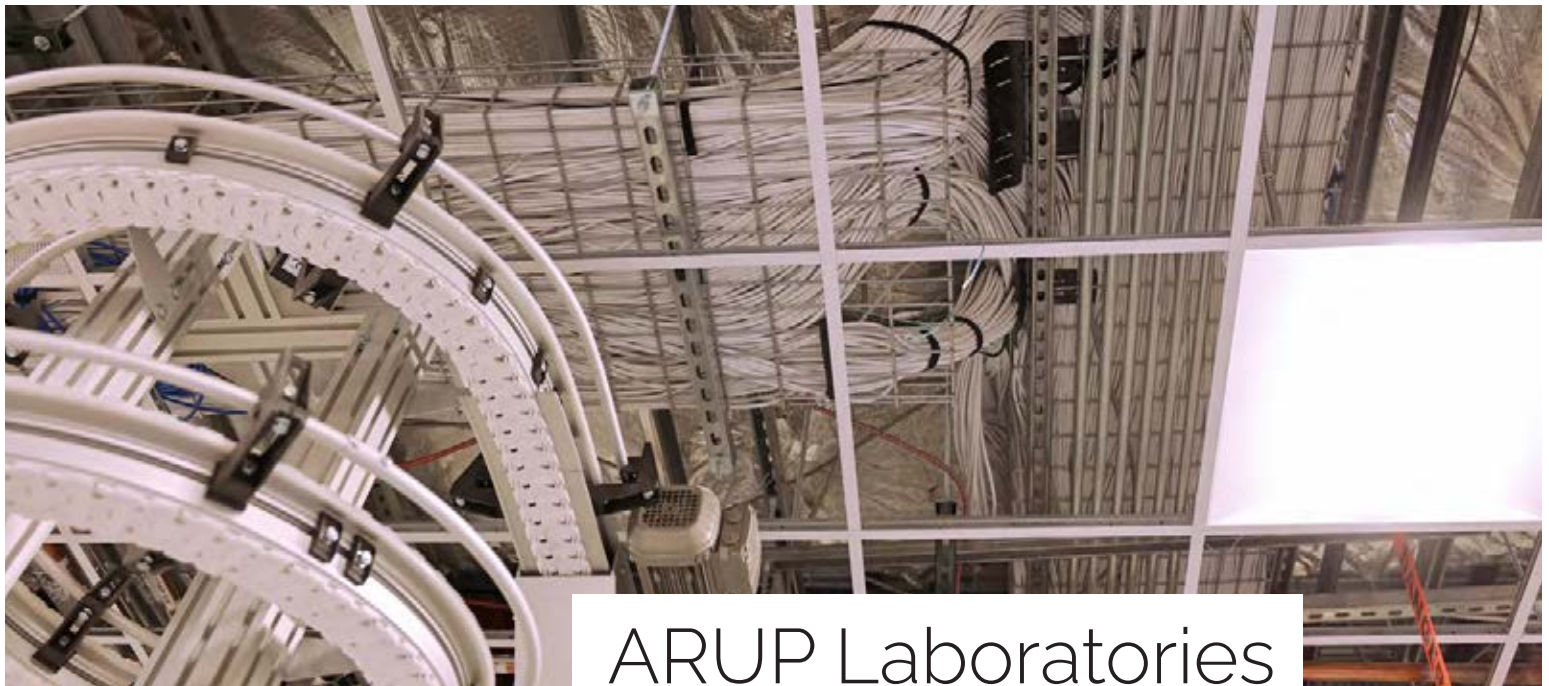
CVE recently completed a commercial to residential space conversion project for Douglas Emmett Group at 1132 Bishop Street in downtown Honolulu. The goal of the project was to maintain the Douglas Emmett design and quality standards for their tenants—from large marble flooring slabs to bathroom mirrors with side-lit LED to high lobby ceilings with recessed LED fixtures that wrap around the ceiling and walls.

CVE worked in a design assist role to help convert 12 floors of the building to residential units. The work included a lobby upgrade, parcel pending area, co-working space, leasing office, electrical room, and rooftop modifications.

## SCOPE OF WORK

- Systematically converting commercial to residential space while tenants occupied an active building
- Updating electrical rooms and changing bus ducts that feed multiple floors
- Revitalizing an outdated lobby with modern lighting
- Power metering system that automatically sends weekly reports to an energy management console





# ARUP Laboratories

## SALT LAKE CITY, UT

**225,000** SQ FT

**ARUP** OWNER

**OKLAND CONSTRUCTION** GENERAL CONTRACTOR

CVE DIVISION **TELEDATA**

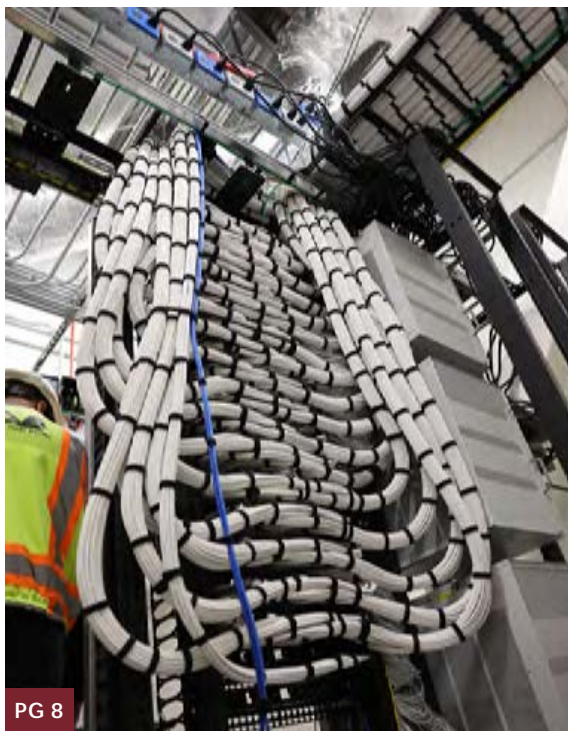
### PROJECT OVERVIEW

Cache Valley Electric's teledata division installed over one million feet of category 6A cabling for new data, WAP (Wireless Access Points), and camera systems at ARUP Laboratories' new 225,000 square foot building at its Salt Lake City, Utah campus.

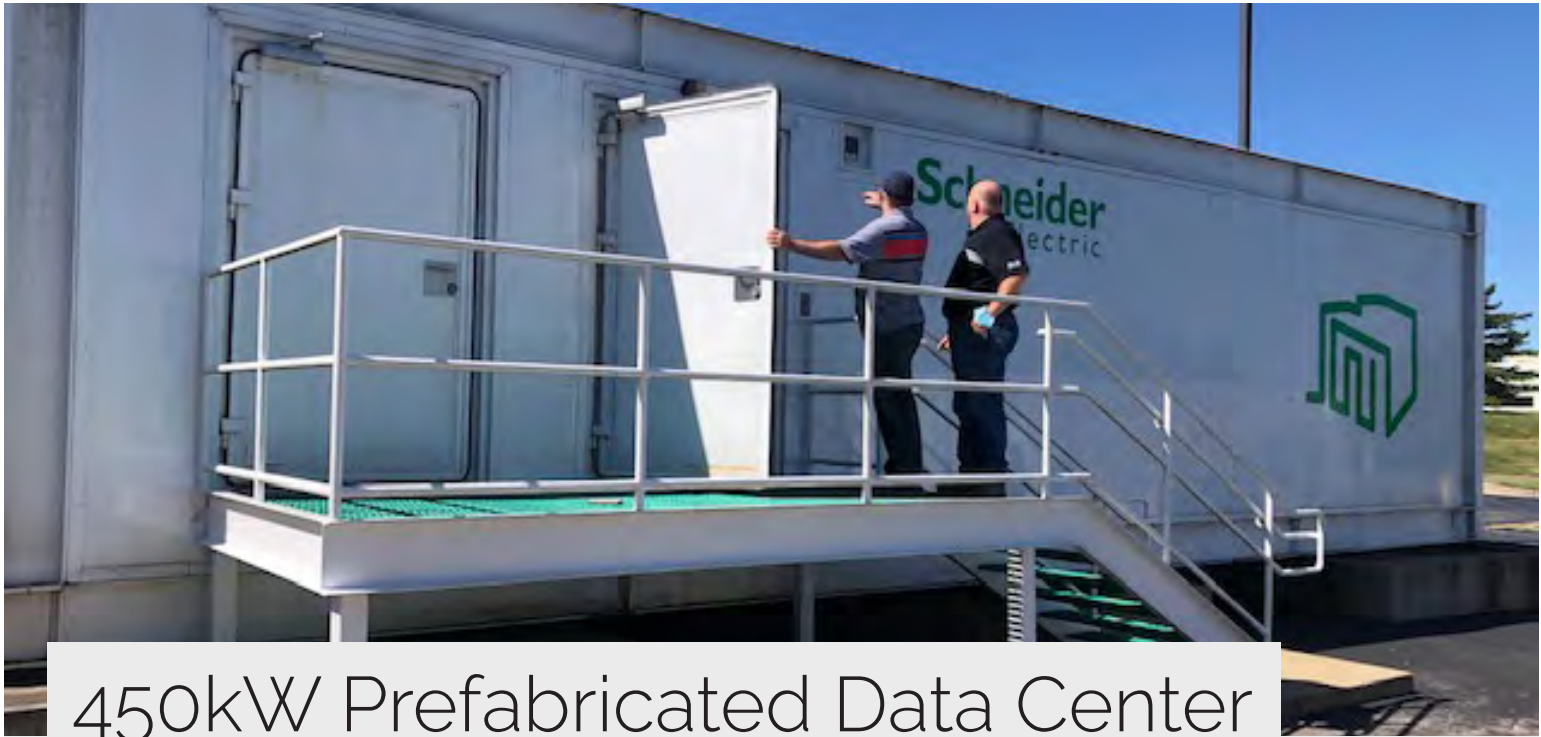
CVE's scope of work included building out eight new TDRs (Technology Distribution Rooms) as well as installation of a new single mode fiber optic backbone between two existing ARUP buildings and the TDRs. CVE on-site crews, prefabrication, and BIM teams coordinated the installation of overhead basket trays throughout the building's four floors.

### SCOPE OF WORK

- > 1,000,000 lineal feet of category 6A data cable
- > 20,000 lineal feet for fiber optic backbone
- > 12,000 lineal feet of overhead basket tray
- > 200 fiber optic terminations
- > 3,500 category 6A data jacks
- > 31 equipment racks







# 450kW Prefabricated Data Center

**OSCEOLA, AR**

**1,620**  
SQ FT

**BIG RIVER STEEL**  
OWNER

CVE DIVISIONS **CVE TECHNOLOGIES GROUP,**  
**HEAVY INDUSTRIAL, TELEDATA**

## PROJECT OVERVIEW

Big River Steel wanted to transition from a hosted data center to an on-site location in Osceola, Arkansas, which required building a new data center on an existing 1,300-acre steel mill site that produces 1.7 million tons of hot-rolled coiled steel per year.

As CVE Technologies Group discussed the options with Big River Steel, the best choice was a prefabricated data center from APC Schneider Electric. These data centers are built to the customer's specifications and shipped to the end user's location—complete with power, cooling, fire suppression, cable trays, UPS power, and racks for equipment.

CVE has been working collaboratively in a design build capacity on this project. CVE Technologies Group will provide all the networking equipment that will go in the new data center. CVE Heavy Industrial Electrical Construction is working on all electrical scope and requirements, and CVE's Teledata team will install all data center cabling.

## ELECTRICAL SCOPE OF WORK

- > Installation of embedded and exposed power and communication conduits
- > 480v 1600 amp redundant service along with emergency generator back up system for the data center
- > Plant-wide communication network cable installation
- > External power and control for chiller units, generator system and pumps
- > External and internal power and building connections on prefabricated building
- > Exterior building lighting and grounding





# Recently Awarded Projects

## ELECTRICAL CONSTRUCTION

BYU Campus SKM Study - Provo, UT  
 Databank SLC5 Data Hall 4&5 - Bluffdale, UT  
 Databank SLC 5 6&7 - Bluffdale, UT  
 Thermo System: EAG - Eagle Mountain, UT  
 Utah DOC CUCF Security Network Backbone - SLC, UT  
 Utah CUCF Intercom Upgrade - SLC, UT  
 Aligned Energy Wagner 2 - West Jordan, UT  
 Aligned Sparrow 2 - West Jordan, UT  
 Northrup Grumman - Clearfield, UT  
 GUC Building - SLC, UT  
 Procter & Gamble - Corinne, UT  
 VCN-1 - Las Lunas, NM  
 Job Industrial Services - SLC, UT

## LOGAN HEAVY INDUSTRIAL ELECTRICAL CONSTRUCTION

Miller Hangar @ Salt Lake International Airport - UT  
 Nucor Steel Utah - Plymouth, UT  
 - Spooler Line & Water Treatment Plant Addition  
 Vulcraft Utah - Brigham City, UT  
 - Solar Lab Expansion  
 Western Metals Recycling - Plymouth, UT  
 - Site Lighting Upgrade  
 CMC Steel Arizona - Mesa, AZ  
 - Ladle Furnace Q1 Upgrade Project  
 - AZ2 Merchant Mill  
 Big River Steel Data Center Power Distribution - Osceola, AR

## TRANSMISSION LINE & SUBSTATION

Dixie Power Transmission - St. George, UT  
 ISPC 2400V Line Extension - Delta, UT  
 Moab 345kV Emergency Work - Moab, UT  
 PAC Fire Mitigation - Yreka, CA  
 Albany Transmission Pole Replacement - Albany, OR  
 Grants Pass B Poles - Grants Pass, OR  
 Tanner to Mountain Vista OPGW Installation - Provo, UT

Medford Poles Phase 2 - Medford, OR  
 PGE Pole Inspections - OR  
 PGE Wildfire Corrections - OR  
 Timp-Spanish Fork 138kV Rebuild - Orem, UT  
 Lee Creek Transmission Line - SLC, UT  
 Nebo-Delta 46kV Line Upgrade - Delta, UT  
 Primetals at CMC Steel - Mesa, AZ  
 Wassuk Switching Station - Yerington, NV  
 Craner Flat Substation / Elektron Solar - Delle, UT  
 Sutherland Substation / Cal Maine Foods - Delta, UT  
 90th South Install 30 MVA Transformer - West Jordan, UT  
 NVE Wild Horse Switching Station - Sparks, NV  
 GE Pattern Energy - Mountainair, NM  
 NVE Olinghouse Above-Ground Substation - Reno, NV  
 Peterson Substation - Peterson, UT  
 Maffit Lake Substation Expansion - Cumming, IA  
 Lee Creek Substation - SLC, UT  
 Lassen Substation - Mt. Shasta, CA  
 Nucor Arkansas Transformer Installation - Blytheville, AR

## SERVICE DIVISION

Discover Card - SLC, UT  
 - Processing Center, Generator and Switchgear Replacement  
 Verizon - Boise, ID  
 - Boise State University Arena Distributed Antenna System  
 Ultra Safe Nuclear Co. - SLC, UT  
 - R&D Facility Equipment  
 MUSH Foods - SLC, UT  
 - Processing Facility Equipment  
 Packaging Corporation of America - SLC, UT  
 - 4000 amp Service and Switchgear Upgrade  
 Joseph Smith Memorial Building - SLC, UT  
 - Multiple Floor TI and Building Security System  
 Orphium Building - SLC, UT  
 - Emergency Generator

Lamb Weston, Line 6 - American Falls, ID  
 - Data Cabling Conduit System  
 Owens & Minor - West Valley City, UT  
 - Generator

## SIGNAL & UTILITY

2200 W Layton Parkway Power Connection - Layton, UT  
 SLCDA SVRA Hanger 6 - SLC, UT  
 US-89; 500 N. to 2000 N. - Orem, UT  
 PCA - South - 4000 Amp Service Upgrade - SLC, UT  
 Nibley Roundabout 3200 S. 1200 W. - Nibley, UT  
 Evanston Weigh Station Loops - Evanston, WY  
 Hill AFB UTTR CMCC - UT  
 Hill AFB Upgrade Traffic Lights to UDOT Standards - UT  
 Park City SR-248 & Comstock Dr. - UT  
 SR-204; Dual Left NB at US-89 - Harrisville, UT  
 Logan 700 N. & Main Realignment - UT  
 UTA First / Last Mile Folsom Trail Project - SLC, UT  
 UT & WY WIM Sites - Cheyenne, Evanston, Sheridan, WY  
 ITS Improvements at Various Locations - SLC, UT  
 Harrison Blvd. Reconstruction - Ogden, UT  
 Beagley Road & 5900 W. Roadway Extension - West Valley City, UT  
 Lakeview Parkway & Center Street Signal - Provo, UT  
 SLCWRF Gate Foundations - SLC, UT  
 Holladay Hotel Intersection - Holladay, UT  
 Concert Tech Bore for TD at Marine Corps Office - South Salt Lake, UT  
 500 S. State Radar Detection - SLC, UT  
 I-80; SIGNS 1300 E. to 2300 E. & I-215; 3300 S. to 4500 S. - SLC, UT  
 Spanish Fork City Spring Upgrades 2021 - Spanish Fork, UT  
 SR-232; Lighting Improvements - Layton, UT  
 I-80 Cable Barrier MP 0-20 Pole Foundation Relocation - Tooele, UT

Malt-O-Meal Light Pole Setting - Tremonton, UT  
 2500 N. & Wolfpack Way Signal - N. Logan, UT  
 Brigham City Airport Sign Repair - Brigham City, UT  
 Fiber Path for AT&T Fiber at Northrop Grumman - Corinne, UT  
 Utah State University 700 N. Reconstruction - Logan, UT  
 JBS Generator Pad - Hyrum, UT  
 Utah State University Swenson Park - Logan, UT  
 University of Utah Powder Sites - SLC, UT  
 Nibley Relocate Roundabout - Nibley, UT  
 Granite Construction Storage Building - SLC, UT  
 UTA First/Last Mile WVC Bike Lanes - West Valley City, UT  
 Remote CCTV System Replacements - Various UT Locations  
 Tooele Army Depot - Granite Pozzolan Plant - Tooele, UT  
 North Cargo Apron Site Development - Airfield Lighting - SLC, UT  
 1300 N. 1000 W. Fiber Box Relocation - Logan, UT  
 US-89; 26th St. to 22nd St. - Ogden, UT  
 300 W. Streetscape Beautification - SLC, UT  
 Tri-City Substation - UT  
 Parley Water Treatment - SLC, UT  
 Timpanogos SSD WWTP - American Fork, UT

## AVTEC

BioFire - SLC, UT  
 - Administration Facility Security Project  
 Central Valley Water Reclamation - SLC, UT  
 - Plant Improvements Project Security Controls  
 - Plant Entrance Gate Security Project  
 Chelan County PUD - Wenatchee, WA  
 - Service Center Complex  
 - Security Barrier Arm Project  
 Dominion Energy - UT  
 - Magna LNG Project



Price Service Center - UT  
 - Vernal Service Center  
 - Bruin Peak

Flexential Security Controls Projects  
 - Portland, OR  
 - Millcreek, UT  
 - Denver, CO

LUCID Software - South Jordan, UT  
 - Security Controls Project

Park City Municipal - Park City, UT  
 - Well Site Security Project

PacifiCorp  
 - Wind Generation/Transmission - WY  
 - Grid Transmission Security Projects

Pacific Soda - Green River, WY  
 - Green River Office Security Project

S\*Power  
 - Skipjack Security Project - VA  
 - Michigan Collector Substations Security Projects - MI

Salt Lake City Department of Airports - SLC, UT  
 - Design Package 10 Security Projects

Salt Lake City Department of Public Utilities - SLC, UT  
 - Water Reclamation Facility Security  
 - Water Reclamation Security Gate  
 - Parley's Water Network Upgrade

St. John's Hospital Sage Living Facility - Jackson Hole, WY

Sutter Health - SLC, UT  
 - Security Upgrade Project

Utah State Office Building - Taylorsville, UT  
 - Security Project

Western Governor's University - SLC, UT  
 - Tower Security Project(s)

Zions Bank - Midvale, UT  
 - Tech Center Security Project

#### TELEDATA/MULTIMEDIA/ WIRELESS/DAS

##### TELEDATA

Zions Bank - Midvale, UT  
 Divvy 4th Floor - Draper, UT  
 Joseph Smith Memorial Building 2nd Floor - SLC, UT  
 650 Main - SLC, UT  
 Goldman Sachs Fiber Backbone - SLC, UT

SoFi TI - Murray, UT  
 SLC Convention Center Hotel - SLC, UT  
 Mountain View Hospital NICU - Idaho Falls, ID  
 USDA - SLC, UT  
 University of Utah North Parking Structure - SLC, UT  
 University of Utah Helix Building - SLC, UT  
 University of Utah Replacement and Wireless Updates Phase 2 - SLC, UT  
 University of Utah HEB Level 4 - SLC, UT  
 Ferron Elementary - Ferron, UT  
 Housing Connect - SLC, UT  
 Taylorsville High School - Taylorsville, UT  
 Polaris West - American Fork, UT  
 UBS - SLC, UT  
 Utah State Correctional Facility - SLC, UT  
 Utah State Capitol Preservation Board - SLC, UT  
 Lamb Weston - American Falls, ID  
 Ogden Clinic Women's Center - Ogden, UT  
 UTA Trax New Airport Platform - SLC, UT  
 UDOT I-80 & I-215 DD - SLC, UT  
 UDOT US-40 & 1500 S. - Vernal, UT  
 P&G Cabinet Change Out - Corinne, UT  
 Butler Middle School Auditorium Cabling - Cottonwood Heights, UT  
 Convergent Jubilee House Cameras - West Valley City, UT  
 Intermountain Healthcare Primary Children's Hospital Totguard Phase 2 - SLC, UT  
 Intermountain Healthcare Sevier Hospital Remodel - Richfield, UT  
 Intermountain Healthcare McKay Dee CC - Ogden, UT  
 Intermountain Healthcare Orem Pediatric Rehab Remodel - Orem, UT  
 Intermountain Healthcare SGRH Bed Expansion - St. George, UT  
 Intermountain Healthcare LRH - Logan, UT  
 Intermountain Healthcare SGRH Radiation Oncology Physicians Office - St. George, UT  
 Memorial Hospital of Sweetwater County - Rock Springs, WY

UDOT West Davis Corridor - Layton, UT  
 Hawaii Convention Center - Honolulu, HI  
 KR2 OFC Site - HI

#### MULTIMEDIA

SLCC Juniper Building - Herriman, UT  
 CHG Healthcare Video Conferencing Upgrades - Midvale, UT  
 rPlus Energies Office Multimedia Technology - SLC, UT  
 WCF Insurance Training Rooms Video Conferencing Upgrade - Sandy, UT  
 Intermountain Healthcare Park City Hospital Boardroom - Park City, UT  
 SoFi Sandy Office - Sandy, UT  
 Health Equity - Irving, TX  
 Holiday Oil Daybreak Warehouse - Herriman, UT  
 Bank of Utah Boardroom - Ogden, UT  
 Podium - Lehi, UT  
 BYU LED Video Wall - Provo, UT  
 State of Utah Senate Committee Rooms - SLC, UT  
 Divvy HQ - Draper, UT  
 The Church of Jesus Christ of Latter-Day Saints - Taylorsville, UT Temple

#### WIRELESS/DAS

BPA Hawthorne - OR  
 UCSD The "U" Downtown - CA  
 UCI Center for Advanced Care - CA  
 UCI Verano - CA  
 SLCC Convention Center - UT  
 ExtraMile Arena - ID  
 Mile High Apartments - CO

#### CVE PORTLAND

iLani Hotel - Ridgefield, WA  
 - Structured Cabling, Audio Video, Security, DAS  
 OHSU - Portland, OR  
 - Wireless Access Point Upgrades  
 City of Portland - Portland, OR  
 - Security, Access Control  
 Nike WHQ - Beaverton, OR  
 - Audio Video Service  
 Nike Retail - Nationwide  
 - Structured Cabling  
 WCCA 911 Center - Hillsboro, OR  
 - Structured Cabling

PeaceHealth - Springfield, OR  
 - Structured Cabling, Nurse Call, DAS  
 Viewpoint Software - Portland, OR  
 - Audio Video  
 Oregon Military Department - Salem, OR  
 - Audio Video  
 PCC Structures - Portland, OR  
 - Structured Cabling  
 Estacada School District - Estacada, OR  
 - Wireless Access Point Upgrades  
 Surescripts - Beaverton, OR  
 - Structured Cabling, Security  
 Clackamas County Building - Clackamas, OR  
 - Security  
 Columbia Memorial Hospital - Astoria, OR  
 - Structured Cabling, Audio Video  
 Providence Health Sleep Center - Newberg, OR  
 - Structured Cabling, Nurse Call

#### CVE TECHNOLOGIES GROUP

Equinix Inc.  
 Autoliv  
 University of Utah  
 Huntsman Cancer Institute  
 Ivanti  
 State of Utah  
 State of Utah Courts  
 Oregon Department of Justice

#### OBSERVIAN

State of Utah - Google Workspaces  
 State of Utah - Data Center  
 Salt Lake County  
 Cache County  
 Deseret Digital Media  
 Essentia Analytics  
 Webflow  
 LiveView Technologies



#### LOGAN CORPORATE OFFICE

875 North 1000 West  
Logan, UT 84321  
435-752-6405

#### SALT LAKE CITY OFFICE

1338 S. Gustin Road  
Salt Lake City, UT 84104  
801-908-6666

#### ARKANSAS OFFICE

5590 E. State Hwy. 137  
Blytheville, AR 72315  
870-824-6670

#### OREGON OFFICE

12550 SW 68th Ave.  
Portland, OR 97223  
503-431-6600

#### TEXAS OFFICE

4100 W. Royal Ln., Ste. 160  
Irving, TX 75063  
469-844-5730

#### HAWAII OFFICE

733 Bishop St., Ste 2170  
Honolulu, HI 96813  
808-354-0080

[WWW.CVE.COM](http://WWW.CVE.COM)



**CACHE VALLEY ELECTRIC**

Cache Valley Electric  
875 North 1000 West  
Logan, UT 84321

PRST STD  
U.S. POSTAGE  
PAID  
SLC, UT  
PERMIT 6

Return Service  
Requested

# Customer Appreciation Golf Tournaments

**CACHE VALLEY ELECTRIC – JUNE 11, 2021**  
**CVE TECHNOLOGIES GROUP – SEPTEMBER 10, 2021**

"CVE Family" refers to more than just our CVE employees. It also includes our most valued customers. We are grateful to be a part of projects and relationships we build alongside all our customers. Our customers' success is our success.

The Annual Cache Valley Electric Customer Appreciation Golf Tournament was back this summer at Eaglewood Golf Course, and the competition was better than ever. The winning foursome scored a 58!

CVE Technologies Group's Customer Appreciation Golf Tournament at Bountiful Ridge was wonderful day of golf, food, and fun, with a quick thunderstorm finale. Thank you to all CVE Tech partners, customers, and employees for another memorable event!

Thank you again to all golfers, and we look forward to next year's tournaments.

