



CACHE VALLEY ELECTRIC
A TRADITION OF EXCELLENCE SINCE 1915

VOL 21 ISSUE 1 | SPRING 2021

NEWSLETTER



Pluralsight Headquarters

DRAPER, UTAH

350,000 SQ FT

OKLAND CONSTRUCTION GENERAL CONTRACTOR

PLURALSIGHT OWNER

LAYTON ICS INTERIOR BUILDOUT

CVE DIVISIONS **MULTIMEDIA, TELEDATA, WIRELESS**

PROJECT OVERVIEW

CVE Multimedia worked diligently in a design-build capacity with Pluralsight and its entire project team to create a forward-thinking approach to the AV solutions for their new 350,000 square foot global headquarters located in Draper, Utah.

Upon entering the building, visitors are greeted by a 48-foot wide by 8-foot tall direct-view LED wall in the main entryway. The multi-window processor driving this LED wall will allow Pluralsight to create an ever-changing digital mosaic.

Pluralsight's primary all-hands meetings space, known as the Skills Hub, also features direct-view LED technology in the form of two 165-inch displays. The secondary all-hands meeting space features a Da-Lite 226-inch diagonal WireLine motorized projection screen, which descends from a 35-foot ceiling to be viewable from both the first and second floors. This screen is paired with a Panasonic 16,000-lumen laser projector. Both all-hands spaces have the capability to stream a live

continued on page 2



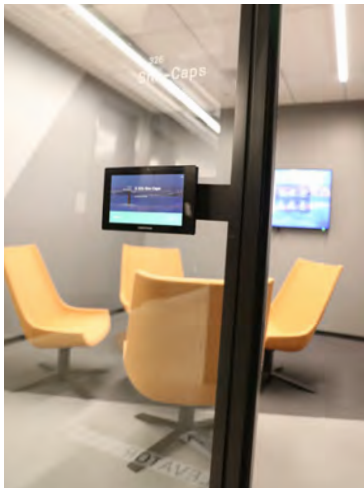
Pluralsight Headquarters, continued from pg 1



AV feed to other parts of the building, acting as overflow, via a Crestron NVX network streaming solution.

Throughout the building, 103 uniquely designed Zoom UC conference and collaboration rooms feature Crestron UC-Flex simple one-touch to join video call functionality.

Crestron Fusion was deployed to handle room scheduling, and every meeting room has a dedicated room scheduling touch panel. The Fusion appliance is also tied into a custom Wayfinding solution. There are multiple 50-inch touch displays located on each floor near the elevator lobbies which show the floor layout, and all meeting rooms with real-time feedback specifying room availability and occupancy. Individuals will be able to secure a meeting room directly from one of the Wayfinding displays. This functionality was a special request from Pluralsight that CVE Multimedia was able to design in-house and deliver.



TELEDATA SCOPE OF WORK

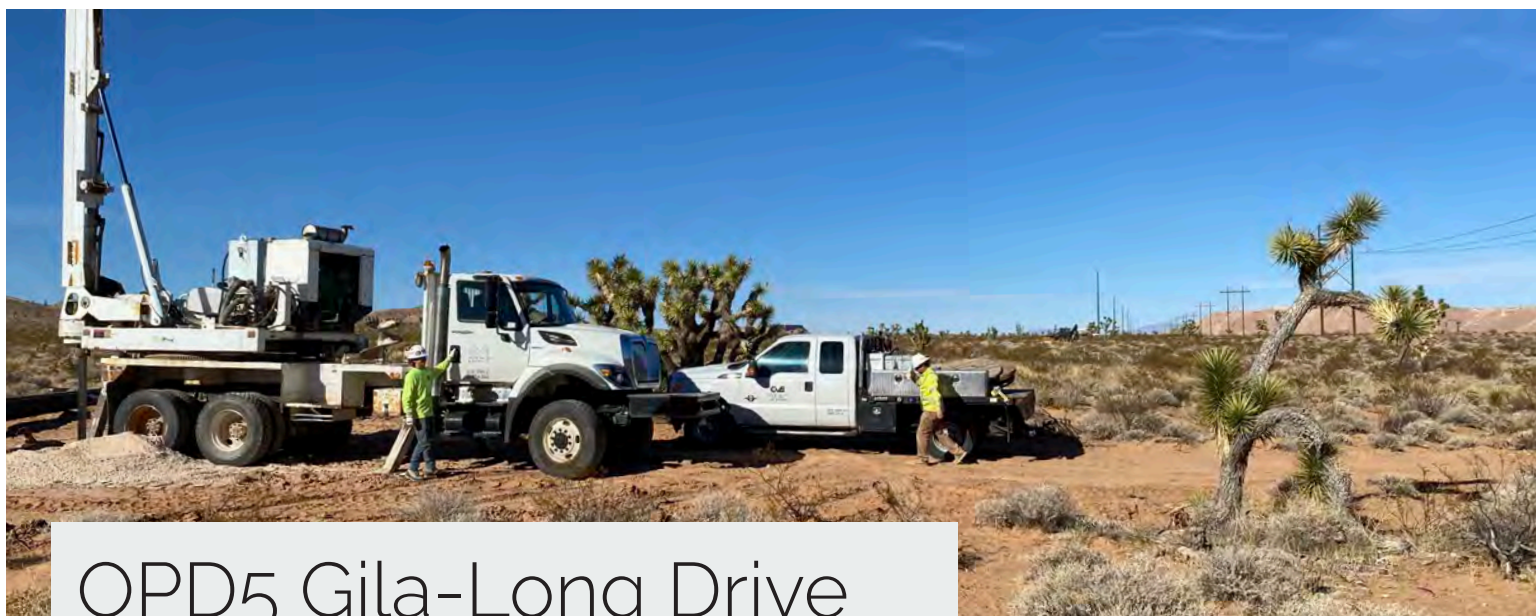
- 4,000+ Cat 6E/Cat 6A cable project that took over 800,000 feet of cable to complete
- Installed a redundant OM3 24 Strand fiber optic backbone to each IDF (intermediate distribution frame) closet
- 1 MDF (main distribution frame) closet and 7 IDF closets with an average of three racks per closet
- Installed 5,000 feet of wire basket tray for horizontal cable support
- Installed the data cabling for all workstations, including 130 10-gig access points, indoor and outdoor cameras, audio video network drops, car charging stations, wayfinding, door access, scheduling panels and shade controls



DAS/WIRELESS SCOPE OF WORK

At Pluralsight, CVE's DAS/Wireless team designed and installed a single sector in-building multi-carrier DAS (Distributed Antenna System) to cover all major carriers including Verizon, AT&T, and T-Mobile. They also designed and installed the 800MHz Public Safety System to enhance emergency responder coverage throughout the Pluralsight campus. CVE's relationships with the carriers enabled the DAS team to coordinate a quick deployment of RF sources in order to provide service quickly to the building upon opening.





OPD5 Gila-Long Drive 138kV Transmission Line

MESQUITE, NEVADA

10 MILES OF 138KV
TRANSMISSION LINE

OVERTON POWER DISTRICT NO. 5
OWNER/GENERAL CONTRACTOR

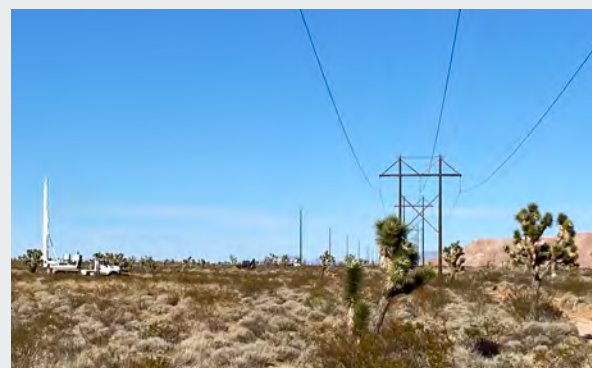
CVE DIVISION **TRANSMISSION LINE & SUBSTATION**

PROJECT OVERVIEW

Cache Valley Electric's Transmission Line crews have been working with Overton Power District 5 to construct a 10-mile single circuit 138kV transmission line between the new Gila substation and an existing double circuit dead-end structure near Long Drive in Mesquite, Nevada. This new transmission line will help provide reliable power to 15,000 customers.

SCOPE OF WORK

- 72 single pole circuit structures
- 53 direct embed tangents
- 2 direct embed H-frame tangents
- 11 direct embed three-pole dead-ends
- 1 self-supporting dead-end on concrete pier foundation
- All structures are weathered steel poles
- New 795 KCMIL 86/7 ACSR Drake will be utilized for phase conductors with one 48 fiber OPGW for the entirety of the line and one 3/8" shield wire in sections in requiring additional shielding



Davis School District Wireless & Data Center Firewall Replacement

LAYTON, UTAH

DAVIS SCHOOL DISTRICT OWNER

CVE DIVISION **CVE TECHNOLOGIES GROUP**

PROJECT OVERVIEW

Davis School District, Utah's second-largest district, with approximately 73,000 students, needed to ensure that all its students, teachers, and staff, whether working and learning in school or remotely had secure network access.

Davis School District was hitting a limitation with its legacy firewall that was causing performance issues for the students and staff on their wireless networks. The District's initial plan was to scale up the firewall count to handle the load of increasing student devices. CVE Tech proposed a different solution that made it possible to keep the firewall count down and still be able to secure the increasing load of student devices.

Included in the scope of the project was a set of firewalls to protect the District's data center. The new Next Generation Firewalls give them insight into what applications are being used, which user is using them as



well as protection against the latest and emerging threats. Having this depth of visibility into these areas of their network will help the Davis School District IT staff focus their efforts and improve their overall security posture.

SCOPE OF WORK

- Configuration and design of 6 firewalls instead of 10
- Increased visibility improving Davis School District's overall security posture
- CVE Tech partnered with Palo Alto Networks to provide their next gen firewalls and advanced capabilities

BUSINESS ISSUE SOLVED

Davis School District was able to purchase 6 firewalls instead of the proposed 10 based on the technical architecture, which saved the district approximately \$200,000 while giving them new state-of-the-art firewalls with centralized management.

Disney Aulani

KAPOLEI, HAWAII

21 ACRES **DISNEY VACATION CLUB** OWNER

CVE DIVISION **TELEDATA**



PG 4

PROJECT OVERVIEW

Disney Aulani Resort in Kapolei, Hawaii recently contracted Cache Valley Electric's teledata team to upgrade its copper and fiber network with new Cat6A and fiber backbone. The project had a short two-month time frame and CVE's Hawaii teledata team delivered the project on-time within budget.

SCOPE OF WORK

- Installation of 110,000 feet of 6-strand fiber and microduct installed to 517 guest rooms
- Installation of 80,000 feet of Cat6A horizontal cabling to support wireless access points, guest rooms, ballrooms, and common areas
- Installation of 50,000 feet of 24-strand and 288-strand Clearfield fiber backbone cabling
- Installation of all GPON (Gigabit Passive Optical Network) equipment



Hyatt Regency Hotel

SALT LAKE CITY, UTAH

685,000 SQ FT
327 FT HIGH

HENSEL PHELPS
GENERAL CONTRACTOR

**SALT LAKE CITY CH, LLC (PORTMAN HOLDINGS/
HENSEL PHELPS DEVELOPMENT) OWNER**

CVE DIVISIONS **ELECTRICAL CONSTRUCTION, SIGNAL & UTILITY, TELEDATA/AV/DAS, AVTEC, IoT**

PROJECT OVERVIEW

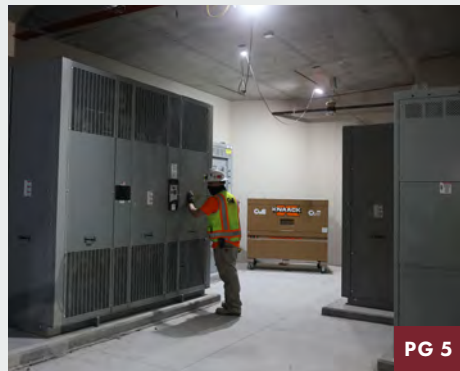
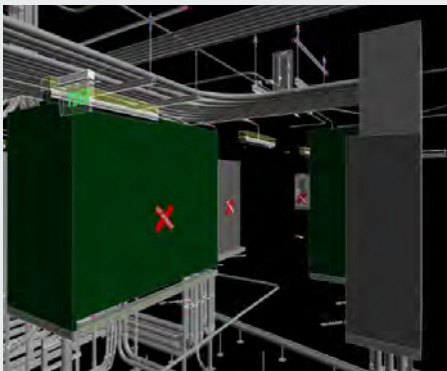
Cache Valley Electric is Hensel Phelps' electrical construction trade partner on Salt Lake City's newest high rise hotel. The hotel will be operated as a Hyatt Regency, with direct access into the Salt Palace Convention Center. The basement level through level 6 (podium levels) include parking, mechanical, employee spaces, hotel lobby, bars, restaurant, kitchens, ballrooms/meeting spaces, administration office, exercise/fitness, pool and event decks. Levels 7-25 (guest tower) consist of 700 guest rooms with several suites.

This project involves assistance, coordination, and expertise from CVE's Electrical Construction, VDC/Prefab, SUD, Teledata, AV, DAS, Avtec and IoT teams. Preconstruction started in June 2019 and construction began in January 2020. Project completion is scheduled for September 2022.

CURRENT SCOPE OF WORK

- This is a design-assist project and includes complete electrical system and other key infrastructure systems for the entire property.

- Primary utility service infrastructure had to be installed. CVE's SUD group trenched across the intersection of 100 S. West Temple then south to 170 S. The concrete-encased duct bank consisted of 12 6-inch PVC conduits, and 2 pull vaults.
- The electrical service/main distribution into the building is a primary service requiring MV (medium voltage) metering, MV switch and MV transformers.
- CVE's VDC/Prefab group has been key to the preconstruction phase of the project for layout, sleeving and embeds in the post-tension slabs as well as the prefabrication of rough-in kitting.
- CVE IoT (Internet of Things) Solutions designed and is maintaining the entire job site WiFi system.





Intermountain Healthcare Utah Valley Hospital

PROVO, UTAH

617,860
SQ FT

JACOBSEN CONSTRUCTION
GENERAL CONTRACTOR

INTERMOUNTAIN
HEALTHCARE OWNER

CVE DIVISION **TELEDATA**

PROJECT OVERVIEW

This project included the buildout of a new TEC (technology equipment center) and twenty new TDRs (technology distribution rooms) for the campus network system. Crews provided and installed all new backbone cabling for the new TDR's, existing hospital TEC, and DAS System. Low voltage cabling was installed for voice, data, WAP, cameras, and patient monitoring systems, as well as cabling for Steris in all nineteen operating rooms. This project involved the renovation and re-cable of 101,823 square feet of existing hospital space.

Foreman Trinton Thomas supervised 20 technicians at the peak of the project. The entire project took three years to complete. CVE's teledata team also completed two additional bid packages associated with the new 12-story hospital tower including a new pedestrian bridge over State Street.

SCOPE OF WORK

- Approximately 24,400 cable drops
- Installation of just over 3,000,000 feet of Siemon CAT6A F/UTP cable
- Installation of over 26,000 feet of 24 St Single Mode Fiber and 2,400 feet of 144 St Single Mode fiber

Recently Awarded Projects

ELECTRICAL CONSTRUCTION

P&G line support
Aligned Energy Valkyrie
Aligned Energy Wagner
EAG 5-6 BMS
Eag 5-6 F/A
EAG 5-6 MV, Electrical
EAG 5-6 Pre-cast Telco
EAG PEMB remodel

Cambia CLC & PDU coordination upgrade
USCF MATV
USCF Additional SEC Security
Electronics contracts to CML Securities

- Staff Dining Building
- Board of Pardons Building
- Visitation Building
- Motor Transportation Building
- Maintenance Building
- Vehicle Sally Port Facility

- Vehicle Directional Station Facility
- Screening Building

Logan Regional Hospital

- preconstruction

Verizon MSC AC-UPS expansion
DLB Verizon BAS

LOGAN ELECTRICAL CONSTRUCTION

Ongoing Misc maintenance and small projects at Thermo Fisher and JBS.
Misc small projects ATK/Northrup
Grumman Promontory and Clearfield sites

USU Bioengineering Building
USU SDL SAINT Bid Pack 2
JBS Pre-Treatment Waste Water
West Liberty Foods Design/Build
Boiler Building
North Schreiber's Service Gear Change
Cache Valley Specialty Hospital
Emergency Power Upgrade

Recently Awarded Projects

HEAVY INDUSTRIAL

- SDI – Texas
 - Hot Mill Process Electrical Installation
 - 5kv Plant Distribution Ductbanks
 - CCL Process Electrical Installation
 - 35kv Cable Installation
 - PLTCM Building Services
 - Hot Mill Busway
 - Hot Mill 480v Power Distribution
 - Finishing Mill Embeds
 - Roughing Mill Embeds
 - Tunnel Furnace Embeds
 - Laminar Cooling Embeds
 - Water Treatment Buildings Cable Tray
 - Fiber Backbone Installation
 - Lagoon Pump House Electrical
 - Cold Mill OH doors and 120v

- Primetals – Texas
 - HV Pfisterer Terminations

- Gerdau Ameristeel – Georgia
 - Saw Upgrade
 - Straightener Upgrade
 - Mill Stands Upgrade

- CMC Steel – South Carolina
 - Stacker electrical Installation

- Nucor Steel – Arkansas
 - Nucor T-6 installation
 - Nucor Paint Line Lighting
 - Nucor Galvanizing Line Furnace

- Air Liquide – Arkansas
 - Cold Box Installation

HAWAII ELECTRICAL CONSTRUCTION

- Bishop Residential Conversion
 - Phase 3
- Pua Loki Affordable Housing
- KR2 - Private Ranch

TRANSMISSION LINE & SUBSTATION

- Dock Crew – American Fork, UT
- Dock Crew – Eagle Mountain, UT
- Bloomington to Green Valley
 - Transmission Line – St. George, UT
- Gonder – McGill 25kV Rebuild, Ely, NV
- Dock Crew – Lincoln City, OR
- North Snake Reconductor 30 Miles – Ely, NV
- USU North & South Substations – Logan, UT
- Lee Creek Substation – SLC, UT
- Morning Hornet Substation – Kennesaw, GA
- Johnson Creek Substation – Des Moines, IA
- EMS-Ashgrove 138kV Breaker Change Out – Leamington, UT
- Castle Solar, McFadden Sub – Huntington, UT
- Graphite Solar – Price, UT
- CRH 15 Summer Concerns Distribution – Cedar City, UT
- 2020 NW Storm Response – 15 crews working 16-hour days for two weeks to restore 350,000 customers with power – Albany-Portland, OR

SERVICE DIVISION

- Dannon - Boccard – Reno Project
- West Jordan, UT

- LDS Conference Center – Camera Upgrade Salt Lake City, UT
- Fidelity – AF-Litum Sensor Project SLC & American Fork, UT
- Intermountain Health Care – COVID Testing Units Utah
- Albany – UPS Power for the Autoclaves SLC, UT
- LDS Murray Cannery Relocation Harrisville, UT

SIGNAL & UTILITY

- SW Wyoming Imaging Center - Evanston, WY
- Westwood relocation for Line - Park City, UT
- Malone Powersports Bore for Teledata I-15; SR-13 Interchange SB on Ramp Box Elder, UT
- SLCWRF Fiber Conduit for Teledata Power to Sugar Alley RMP Bore, Evanston for Line 9270 South State St; 150 E to State St DP-11A Airfield Paving - Airfield Lighting 500 E Automall Dr Signal – American Fork, UT
- US-89; Bear Lake Marina Access Improvements
- US-40 & 1500 So. Traffic Signal – Vernal, UT
- SR-108 & SR-37 Lighting Upgrade – Clinton, UT
- SR-108 & Chelemes Way, Lighting Upgrade - Clearfield, UT
- SR-204 & 2nd Street Lighting Upgrade - Ogden, UT
- SR-203 & 28th Street Lighting Upgrade - Ogden, UT
- 1200 W & 2100 No, Signal Install – Lehi UT
- Redwood Road & 700 No Matrix Install
- US-6 & SB I-15 On-Ramp, RRFB – Santaquin, UT
- US-89 & 1650 West, Signal & Lighting – Pleasant Grove, UT
- Weber State University BRT - Ogden, UT

AVTEC

- Hotel Hanalei – Physical Security Controls
- BioFire – Administration Phase 1 – Security Controls
- Central Valley Water Reclamation Plant Improvements Project Phase 3 – Security Controls
- Chelan County PUD
 - Facility Ground Based Radar Systems
 - Remote Site – VSS System Implementations
 - Rocky Reach Hydro – Central Maintenance / Discovery Center Security
- Dominion Energy:
 - Lakeside Plant
 - Flyer Way Station
 - Rose Park Station
- Flexential
 - Security Controls System Upgrades Phoenix, AZ
- Metropolitan Water District of Salt Lake & Sandy - LCWTP – VSS Upgrades Phase 2

- PacifiCorp
 - Wind Generation / Transmission – Security Project
 - Hydro Control – Lewis River VSS Upgrades
 - Hydro Control – Klamath River VSS Upgrades

- Priority Dispatch
 - ACS System Upgrade

- S'Power
 - Spotsylvania, PV – Security Project
 - Clover Creek Substation – Security Project
 - Skip Jack Substation – Security Project

- Salt Lake City Department of Airports
 - Terminal Redevelopment Project – DP10
 - Glycol Facility – CASS/VSS

- WINCO (DTL) – Logan #168 Security

TELEDATA/MULTIMEDIA/WIRELESS

- TELEDATA
 - MHTN Ford Building
 - Bank Of Utah Ogden
 - Taylorville Temple
 - Tooele Temple
 - Orem Temple
 - PCMC 1D Section cabling
 - USCF GMP 21.11
 - eBay Room 1 Block and SANs Build
 - MCE21.0013
- Intermountain Healthcare Lake Park
 - Data Center
 - 1st Floor Remodel
 - Café Remodel
- SLCWRF - New Fiber Line Project
- Intermountain Healthcare SFH Telehealth

MULTIMEDIA

- Hotel Hanalei Bay Background Audio & AV systems – Kauai, HI
- Zions Bank AV Systems – Midvale, UT

WIRELESS/DAS

- Utah State Correctional Facility
- Taylorville State Office Building
- Taylorville Temple
- Tooele Temple
- WSU Noorda Engineering Building
- Compass Minerals Private LTE
- BSU Extra Mile Arena

CVE PORTLAND

- Nike Campus – AV, Structured Cable – Beaverton, OR
- Nike Retail Structured Cable – Nationwide
- Ilani Casino Expansion Project – Structured Cabling & AV – Ridgefield, WA
- PeaceHealth Sacred Heart PS DAS and Structured Cabling – Springfield/Eugene, OR
- PeaceHealth CATH LAB – Structured Cabling – Vancouver, WA
- United Malt Structed Cabling, AV, Security & Soundmasking – Vancouver, WA

- Intel expansion - structured cabling - Hillsboro, OR
- Stoel Rives - AV upgrade projects - Nationwide
- Oregon City Public Works - Structured Cabling & AV – Oregon City, OR
- Portland Community College
 - Structured Cabling & Security– Portland, OR
- WCCCA 911 Center – Structured Cabling, Security – Beaverton, OR
- Navex Global Security – Lake Oswego, OR
- Clackamas County - Technology Security – Oregon City, OR
- City of Portland Security – Portland, OR

CVE TECHNOLOGIES GROUP

- The Church of Jesus Christ of Latter-day Saints
- Equinox Inc.
- Autoliv
- Select Portfolio Servicing
- Salt Lake County
- State of Utah
- Utah Education Network
- State of Utah Courts
- Verisk
- Galileo Processing
- NuSkin
- Valley Behavioral Health
- BioFire Diagnostics
- Utah Transit Authority
- Deseret Digital Media
- Backcountry
- Papa Murphy's
- Utah Valley University
- Progressive Leasing
- Western Governor's University
- Applied Insights, LLC.
- Cache School District
- SOS International LLC
- Cricut
- Duchesne County School District
- Enerbank
- Consumers Power Inc.
- Nebo School District
- Sorenson Communications
- Adobe Systems Inc.
- ProPay
- Capitol Auto Group
- Skywest
- Provo School District
- Northwest Regional ESD
- LHM
- AgReserves
- 1-800Contacts
- SolutionReach
- Micron

OBSERVIAN

- WGU - Lamda Pipeline
- Okland Construction - Web Hook and Data Flow
- Impartner - Big Data POC
- Prestige Financial - Application Migration

LOGAN CORPORATE OFFICE

875 North 1000 West
Logan, UT 84321
435-752-6405

SALT LAKE CITY OFFICE

1338 S. Gustin Road
Salt Lake City, UT 84104
801-908-6666

ARKANSAS OFFICE

5590 E. State Hwy. 137
Blytheville, AR 72315
870-824-6670

OREGON OFFICE

12550 SW 68th Ave.
Portland, OR 97223
503-431-6600

TEXAS OFFICE

4100 W. Royal Ln., Ste. 160
Irving, TX 75063
469-844-5730

HAWAII OFFICE

733 Bishop St., Ste 2170
Honolulu, HI 96813
808-354-0080

WWW.CVE.COM



CACHE VALLEY ELECTRIC

Cache Valley Electric
875 North 1000 West
Logan, UT 84321

PRST STD
U.S. POSTAGE
PAID
SLC, UT
PERMIT 6

Return Service
Requested

Safety is our Policy

At Cache Valley Electric, safety is our number one priority, and we are proud to carry an **EMR (Experience Modification Rate) of .63 for 2021**. Our culture of safety starts with CVE owner and CEO, Jim Laub, who believes that our employees are our greatest resource and keeping them safe always comes first. Our 20+ full-time safety professionals champion our safety-first culture on every job site, every day. A combination of receptiveness from our field personnel and hard work from our safety officers has resulted in a steady decrease of our company's Incident and Lost Workday Rates.

Cache Valley Electric is dedicated to keeping our CVE Family safe, and was recently awarded the **AGC Diamond Safety Award**. What does it take to earn this recognition? Companies are judged by two criteria. First, the company's OSHA Total Recordable Injury Rate must be 50% below the national average. Second, the company's EMOD Rating, which takes workers compensation expenses into account, must be below the industry standard of 1. Thank you to everyone at CVE for your hard work and dedication to safety!

