



CACHE VALLEY ELECTRIC
A TRADITION OF EXCELLENCE SINCE 1915

VOL 20 ISSUE 1 | OCTOBER 2020

NEWSLETTER



Vancouver Waterfront

VANCOUVER, WASHINGTON

KIRKLAND CONSTRUCTION GROUP
GENERAL CONTRACTOR

KIRKLAND DEVELOPMENT OWNER

CVE DIVISIONS **CVE PORTLAND TELEDATA, MULTIMEDIA**

PROJECT OVERVIEW

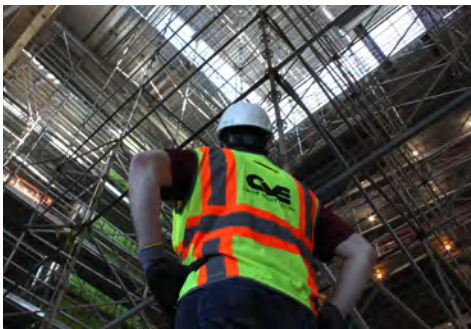
The Vancouver Waterfront is perfectly suited for the 5-Star Hotel Indigo and the attached Luxury Kirkland Tower, featuring 138 rooms and 40 condominiums.

The new riverfront development for the City of Vancouver presents the rare opportunity to create a unique and highly visible waterside urban experience. Block 4, one of the more prominent sites, is close to the river's edge and is clearly visible to travelers crossing the Interstate Bridge. Block 4

itself offers prime views from the site to the river, both the Interstate and rail bridges and prime views up and down river. The site also forms one corner of a proposed gateway to the river and the district approaching from the city core along Esther Street. The building fronts on a cascade of steps leading down to the Columbia River's edge, part of a thoughtful and exciting urban waterside park.

The intriguing Hotel Indigo offers a 5-star urban resort hotel featuring

continued on page 2





Vancouver Riverfront, continued from pg 1

138 rooms, restaurants and lounges, conference facilities and special retail offerings. The hotel is coupled with a condominium tower sheathed in glass providing 40 urban living units with views to the river, the city and the mountains. Lower levels provide parking and both residential and hotel back of house requirements.

Capturing spectacular views of the Columbia River, Kirkland Tower marks the first luxury condominium offering of its kind, introducing an entirely new way to live and experience Vancouver. Residential offerings include a diverse array of floor plans, featuring open, airy interiors, soaring ceilings and private, waterfront terraces. Floor-to-ceiling windows fill interiors with natural light, while highly curated design details by Axiom Luxury Homes showcase a sophisticated, modern vision. Lifestyle amenities include a spectacular rooftop terrace, residents' lounge, fitness studio, co-working spaces, chef's catering kitchen and pet

washing station. Residents also enjoy the restaurants, bars and à la carte services of the adjacent Hotel Indigo.

SCOPE OF WORK

- Commscope structured cabling and fiber backbone for 138 hotel suites and 40 luxury condos
- Crestron touch panel-controlled Audio Video System for a large 4-way dividable/combinable conference center, meeting rooms, fitness center and 4 restaurants
- Milestone/Paxton access control and video surveillance system with 48 managed doors and 168 high resolution cameras
- Commscope DAS system installation
- Meeting Room scheduling touch panels
- Digital Signage for info and wayfinding

Observian Kicks Off Managed Services

Amazon Web Services (AWS) and the cloud have the capability to enhance every business, regardless of size or age. Legacy players are compelled to change basic aspects of their business models, while start-ups and smaller companies are given access to technologies previously only available to the most fortunate.

Whether you are new to the cloud or a seasoned cloud enterprise, we're confident we can provide the resources you need to improve your cloud experience. With a focus on Digital Transformation, our goal at Observian is to help your organization develop repeatable and automated cloud solutions while educating and supporting your team's needs.

OBSERVIAN MANAGED SECURITY SOLUTIONS

- Documented Infrastructure
- Architecture Reviews
- Professional Service
- Dedicated 24/7 Support
- Dedicated Account Manager
- Reporting & Management

Observian launched their Managed Security in August and their Managed Cloud services in the first of September. Learn more at www.observian.com.



Logan Gateway

LOGAN, UTAH

60,000 SQ. FT. BID-D GENERAL CONTRACTOR

ADAMS WEALTH ADVISORS OWNER

CVE DIVISIONS **LOGAN ELECTRICAL CONSTRUCTION, SLC ENGINEERING & CAD GROUP, SIGNAL & UTILITY, AVTEC PHYSICAL SECURITY**

PROJECT OVERVIEW

The Logan Gateway building, currently being constructed by Big-D Construction, is a core and shell design/build project for CVE. This building will be the cornerstone for future growth on the property, such as construction of multi-family units and retail storefronts.

PROJECT HIGHLIGHTS

The new Logan Gateway building is considered to be a class A space and is a one of a kind building in Cache Valley. The project was named Gateway before it landed in its current location of the South entry to Logan, so the name Gateway has become very fitting for the project. It has helped change the face of South Logan.





Nucor Steel Florida

FROSTPROOF, FLORIDA

300,000 SQ FT

NUCOR STEEL GENERAL CONTRACTOR & OWNER

CVE DIVISION

LOGAN HEAVY INDUSTRIAL, TRANSMISSION LINE & SUBSTATION

PROJECT OVERVIEW

Nucor Steel Frostproof Florida is a new Micro Mill that will produce about 350,000 tons of rebar a year. It sits on a 400-acre site in Frostproof, Florida. CVE has averaged about 80 electricians on-site and peaked this summer at around 160 men. CVE Line Division has been awarded the substation and is expected to commission the entire substation this fall.

SCOPE OF WORK

- Site 2MV pole line
- Embedded conduit and site utilities
- From 13.8KV distribution to 480V
- Installation of all distribution gear including substations, medium voltage switch gear, 480V switch gear, panels, PCR control houses and control cabinets
- Plant Process and Network communications
- All Process, automation, control, and instrumentation installation
- Substation

HIGHLIGHTS

The partnership between CVE and Nucor has contributed to the project's success. CVE works alongside Nucor's leadership team of Tommy Massey, Donny Johnson, and Lee Perry. They have been very helpful in resolving issues to keep the workforce moving.



Mercer Substation

EAGLE MOUNTAIN, UTAH

CONFIDENTIAL

GENERAL CONTRACTOR

CONFIDENTIAL

OWNER

CVE DIVISIONS

TRANSMISSION LINE & SUBSTATION

PROJECT OVERVIEW

The CVE Line Division was awarded a time-compressed project from the local power company to meet the power needs of a high-profile customer in Eagle Mountain, Utah.

CVE Line Division constructed a new 345kV substation: Mercer Substation. The substation consists of a new 345kV six-bay breaker and a half-ring bus with six feeds to a customer and four lines back to the grid. Associated switches, bus work, CCVT's, CT/VT's, lightning arresters, control house, and emergency generator were installed.

CVE's Line transmission crew installed a new loop in and out of two 345kV lines to the new Mercer Substation. The loop consists of 8 structures – 3 tangent and 5 angles, all steel monopole structures with concrete pier foundations. The loop in is approximately 1 mile in total length. All structures are double circuit and have bundled conductor.

This project was on a very aggressive schedule to meet the needs of the high-profile customers. CVE Line Division was able to complete the project on time and under budget.



SCOPE OF WORK

- Eighteen 345kV circuit breakers
- Forty-four 345kV airbreak switches
- Eighteen 345kV CCVT's
- Eighteen 345kV metering CT/VT's
- Two 345kV shunt capacitor banks
- Fifteen 345kV dead-ends and associated steel structures
- 7,680 feet of 5 inch and 6 inch aluminum bus and connections
- 52,280 feet of high voltage conductor and connections
- 148,490 feet of power and control cable
- 27 feet x 45 feet control house with associated panels and hardware



Logan Wastewater Treatment Plant

WEST LOGAN CITY, UTAH

MWH CONSTRUCTORS GENERAL CONTRACTOR

LOGAN CITY OWNER

CVE DIVISIONS **LOGAN ELECTRICAL CONSTRUCTION, PRECONSTRUCTION, SIGNAL & UTILITY, TELEDATA, AVTEC**

PROJECT OVERVIEW

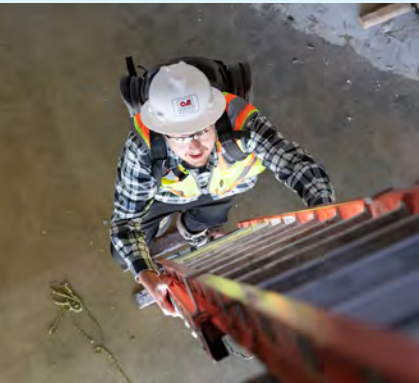
CVE has partnered with Logan City and MWH Constructors to construct a new wastewater facility to replace existing settling ponds. The construction covers a 14-acre plot for main plant site with the scope extending 1-1/2 miles around the existing settling ponds to the new headworks building.

The project will take four years with a substantial completion of June 2022. This is an 18 MGD facility with a potential expansion to 24 MGD. This plant uses a unique process to treat wastewater. Their innovative Bio Mag system uses magnetite, which is a fully-inert iron-ore particle and is used to

enhance the clarification process. The Operations Building was completed separately as a design build.

SCOPE OF WORK

- New MV distribution
- Complete generator backed up system with (2) 1500 KVA gen sets and (1) 1000 KVA gen set
- Complete electrical systems for an operating plant, including distribution, process and controls



Recently Awarded Projects

ELECTRICAL CONSTRUCTION

- Antelope VLL-Admin&VLL-5-6
- Westinghouse 2020 Small Jobs
- 2020 Post Jobs
- Western Metal Small Jobs 2020
- Aligned Energy SLC Bldg A Retail Space
- P&G Project ELIGO
- Aligned Energy SLC Bldg A Supernode
- Vast Data Center
- Geneva Rock Products 2020
- Briggs Electric - VDC Support
- HITT Facebook EAG Warehouse
- Air Products Small Jobs 2020
- AE Potemkin 2.0 Expansion Project
- Facebook EAG #3 -- BMS
- EAG 3 Flex Data Center
- Primary Childrens Hospital
- Facebook EAG #3 -- Fire Alarm
- 2020 West Liberty Foods
- eBay SLC03 Phase 2
- Moxie Lighting - J1952
- EAG#3 FB - Leak Detection, Heat Trace
- Baseboard Heaters
- eBay Bloom Demo
- iBos Warehouse EAG

LOGAN ELECTRICAL CONSTRUCTION

- Food Processing Plant - numerous projects.
- Utah State University - Security Lighting Upgrade
- JBS - Miscellaneous Projects
- Thermo Fisher Scientific- Miscellaneous Projects
- Steel Dynamics (SDI) Sinton, Texas
 - 35kv Plant Distribution Ductbanks
 - Main Substation embeds
 - CGL Embeds and Grounding
 - CCL Embeds and Grounding
 - CCL Process Equipment Installation
 - PLTCM Embeds and Grounding
 - BA/OTM Embeds and Grounding
 - Levy Power Distribution
 - Hot Mill Grounding
- Big River Steel (BRS) Osceola, Arkansas
 - Automomous Coil Storage Process controls and safety
 - LMF 2 Process
 - EAF 2 Process
 - Gas Cleaning Plant 2 Process
 - Primary/Secondary Substations phase 2
 - Waste Water PCR Feeds
 - PCR-G Makeup Water Utility Power
- Gerdau - Cartersville, Georgia - Roll Mill Upgrade

HEAVY INDUSTRIAL ARKANSAS

- Crane Composites
 - Truck Dock Restraints
 - Silo Blower
- Air Liquide
 - Plant 5 Ground Triad
 - Plant 6 Argon Project
 - Electrical Room Fire Alarm
 - Liquefier Switchover
 - Nutanix
 - N2 Compressor

- Carbrite
 - Sacker System
- Lexicon
 - Burner Table
- Nucor Hickman Galvanizing Line
 - Highbay Lighting
 - Entry End Electrical Room
 - Entry End Process Electrical

HAWAII ELECTRICAL CONSTRUCTION

- Bishop Residential Conversion
- Kapiolani MC Electrical Upgrade
- Waimea Huakai Residential Housing
- Pua Loki Residential Housing
- KR2 Site Development
- Honouliuli W/WTP
- Kailua WWTP
- BP Federal

TRANSMISSION LINE & SUBSTATION

- Doc Crew - Park City, UT
- Copco 2 & Weed Junction Substations - Weed, CA
- goTh South Substation Bus Tie Breaker - West Jordan, UT
- Enterprise Valley Substation - Enterprise, UT
- Ochoco Substation - Prineville, OR
- Naples Substation - Naples, UT
- GE Nextra - Big Stone City, SD
- GE Boise Bench - Boise, ID
- Goggin Substation Civil - Salt Lake City, UT
- Q-888 Bullard Substation - Lakeview, OR
- BAF Substation - Rexburg, ID

SERVICE & SPECIALTY PROJECTS

- PCA EVOL Box Machine
- Salt Lake City, UT
- Conduent - Business Unit Build Out
- Sandy, UT
- Graham Packaging - Bottle Line
- West Jordan, UT
- IRS Service Center - Consolidation
- Ogden, UT
- Dannon - Ammonia System Expansion
- West Jordan, UT
- Teleperformance - Generator
- Salt Lake City, UT
- Albany Engineered Composites - Replace Panelboards
- Salt Lake City, UT
- USPS - WiFi Conduit System
- Salt Lake City, UT
- Verizon - Boise State Stadium DAS
- Boise, ID

SIGNAL & UTILITY

- Daybreak Pkwy & Vadiana Signal
- UDOT Region 3 Signs
- Ninigret North III Substation Signal
- Syracuse
- Garden City Bore
- Highland Dr. & Corporate Way Signal
- CR England TSD
- UTA Airport Station Relocation Project
- SR-164 & Mill Road/Woodland Hills Dr

- Clinton 1500 W 1800 No Ped Pole Upgrade
- UTA Tiger Sandy Multi Use Path
- 31st ST & Pennsylvania, Ogden
- SLC Airport IC1, IC2 Comm Raceway & Gate Electrical
- Vail Resorts Trash Compactors
- Wrong Way Detection
- Adams Ave Lighting Upgrade.
- Washington Terrace
- Northrup Grumman Site X Electrical
- Dugway Conduit Path for Fiber for Teledata

AVTEC

- Central Valley Water Reclamation Plant Improvements Project
 - Security Controls
- Divvy
 - Draper Security Controls Project
- Dominion Energy:
 - Riverton Tap - Security Upgrades
 - Hunter Tap - Security Upgrades
 - Roosevelt Ops - Security Upgrades
 - Wilkins Peak - Security Upgrades
 - Church Buttes - Security Upgrades
 - Flexential
 - Security Controls Projects: Portland, OR
- Park City Municipal
 - Three Kings Water Treatment Plant
- Rocky Mountain Power
 - Anticline Substation - Security Controls
 - Aeolus Substation - Security Controls
 - Goshen Substation - Security Controls
- PacifiCorp
 - Wind Generation / Transmission - Security Project
- S*Power
 - Prevailing Winds - Security Project
 - East Line Substation - Security Project
 - Highlander Substation - Security Project
- Salt Lake City Department of Airports
 - Gate 10 / Gate 11 - Video Project
 - Central Screening - Video Project
- Weave
 - Lehi Security Controls Project

TELEDATA/MULTIMEDIA/WIRELESS

- Murray City Hall
- BYU Music Building
- Vivint Solar HQ3
- Divvy
- Ken Garff Jaguar
- USANA North Warehouse
- Sage Living Center
- Quickbase
- Cotiviti
- Overstock Iron Horse Warehouse
- Salt Lake City Public Libraries Wireless
- MACU
- Cache County School District Pixellot Installs

- Granite School District
- Box Elder E-Rate Projects
- Westminister Gillmor Hall
- Mountain View High School
- U of U Wireless Project
- Alpine School District ES 101
- Teleperformance Project Eagle
- American Heritage School
- FBI Firing Range and Test Facility
- IHC Tonaquint DC Phase 1
- eBay datacenter hall
- Boise State University Albertsons Stadium DAS
- SLC VA Hospital

CVE PORTLAND

- Peace Health - nurse call system, Eugene, OR
- Hotel Indigo - structured cabling, security, audio video, Vancouver, WA
- City of Salem - structured cabling, audio video, Salem, OR
- Lake Oswego City Hall - structured cabling, Lake Oswego, OR
- Lincoln City Police Station - structured cabling, security, audio video, Lincoln City, OR
- Patricia Reser Center for the Arts - structured cabling, Beaverton, OR
- George Fox Health OCC Building - structured cabling, security, Newberg, OR
- Capital Auto Group Subaru - structured cabling, Salem, OR
- Zapproved - structured cabling, security, sound masking, Portland, OR
- Logical Position - structured cabling, security, sound masking, Lake Oswego, OR
- New Relic - structured cabling, security, Portland, OR
- iLani Casino Parking Structure - structured cabling, Ridgefield, WA
- Wild Horse Casino - security, Pendleton, OR

CVE TECHNOLOGIES GROUP

- Hawaii State Hospital (Wireless) Hawaii
- Hawaii Dental Services, Hawaii
- Equinix Mexico
- Utah Education Network
- Weber School District
- Cache School District
- Salt Lake School District
- Duchesne School District
- Utah Valley University
- Clackamas ESD, OR

OBSERVIAN

- Okland Construction
- Webflow
- Autoliv
- Monitorbase
- Amplitude
- AHC
- Prestige Financial

LOGAN CORPORATE OFFICE

875 North 1000 West
Logan, UT 84321
435-752-6405

SALT LAKE CITY OFFICE

1338 South Gustin Road
Salt Lake City, UT 84104
801-908-6666

ARKANSAS OFFICE

5590 E. State Hwy. 137
Blytheville, AR 72315
870-824-6670

OREGON OFFICE

12550 SW 68th Ave.
Portland, OR 97223
503-431-6600

TEXAS OFFICE

4100 W. Royal Ln., Ste. 160
Irving, TX 75063
469-844-5730

HAWAII OFFICE

733 Bishop St., Ste 2170
Honolulu, HI 96813
808-354-0080

WWW.CVE.COM



CACHE VALLEY ELECTRIC

Cache Valley Electric
875 North 1000 West
Logan, UT 84321

PRST STD
U.S. POSTAGE
PAID
SLC, UT
PERMIT 6

Return Service
Requested

CVE Tech Customer Appreciation Event

CVE TECHNOLOGIES GROUP CUSTOMER APPRECIATION GOLF TOURNAMENT

"CVE Family" refers to more than just our CVE employees. It also includes our most valued customers.

CVE Technologies Group held their annual Customer Appreciation Golf Tournament at Utah's Bountiful Ridge Golf Course. CVE Tech honored their customers with a socially-distanced day of golf, food and fun. This year's theme was: Endless Summer 2020: In Search of the Ultimate Escape. Thank you to all CVE Tech partners, customers, and employees for a memorable day on the course.

