



CACHE VALLEY ELECTRIC
A TRADITION OF EXCELLENCE SINCE 1915

NEWSLETTER

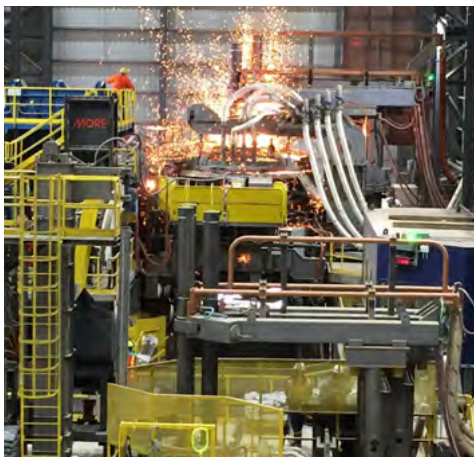


CMC Steel Oklahoma DURANT, OKLAHOMA

220,000
SQ FT

COMMERCIAL METALS COMPANY (CMC)
GENERAL CONTRACTOR, OWNER

CVE DIVISIONS **LOGAN HEAVY INDUSTRIAL, TELEDATA**



PROJECT OVERVIEW

Cache Valley Electric recently completed work on the Commercial Metal Company (CMC) micro mill in Durant, Oklahoma. This is the second micro mill Cache Valley Electric has completed for CMC — the other being located in Mesa, Arizona. At our peak, Cache Valley Electric employed 165 electricians on this two-year project.

Now in full production, CMC Oklahoma will produce straight and spooled rebar as well as t-post fencing. This micro mill utilizes a continuous process, casting and rolling with a single uninterrupted strand from melting to finished product. This latest in technology reduces energy consumption, costs, and improves yield efficiency. CMC Oklahoma has the capacity to produce 390,000 tons of rebar using recycled pre and post-consumer scrap. It can produce #4 rebar through #11 bar sizes and in 20, 40, and 60 feet, also in standard and custom lengths. Spooled rebar will be produced in #3 through #6 bar sizes and offered in spool weights up to 5.5 tons. The spooler system is the first ever in the United States. It can produce spools up to 5000+ feet in length depending on the size of the bar.

continued on page 2

CMC Steel Oklahoma, continued



great leadership and support throughout the entire project. The CMC leadership team worked closely with all trades to ensure that the aggressive construction schedule could be met."

Cache Valley Electric field leadership on this project was made up of longtime CVE employees: Joey Walters-Superintendent, Dale Owens-Engineering/Quality Control/Project Manager, Sam Vaughan - Engineering, Steve Ishee-Safety.

IBEW Local 1141 out of Oklahoma City provided manpower and was an excellent partner on this significant and challenging project.

Ryan Poppleton, who served as Cache Valley Electric's Project Manager felt this project was successful because of the previous working relationships between CMC and CVE. Ryan says, "CMC provided

Equinix Next Gen 2.0

AUSTRALIA



10 DATA CENTERS

EQUINIX PTY AUSTRALIA
OWNER

CVE DIVISIONS **CVE TECHNOLOGIES**

PROJECT OVERVIEW

As Equinix rapidly expands its data center footprint, it needs to bring each new site into its IT infrastructure by migrating from the existing wireless and wired infrastructure to a standardized "stack". Due to CVE's strong performance last year at US based locations, the client requested that CVE conduct the upgrades of its Australian locations in 2018. The work requires both detailed physical cabling design and network engineering expertise. The project tasks progress from site surveys to physical design, network design, equipment sourcing, equipment configuration, shipping, installation, cabling, and migration, utilizing CVE onsite technicians and engineers.

SCOPE OF WORK

The scope of the project has expanded as the client added new sites (from a recent \$1B acquisition) and also requested that CVE provide the network equipment (previously sourced by another vendor). CVE is utilizing an international company to provide local resources for installation work, overseen by those CVE Design and Network Engineers who have extensive experience with the client's network and objectives. Our performance thus far in the project has lead to opportunities to bid additional international work in Australia and several other countries.



Carolyn and Kem Gardner Commons

UNIVERSITY OF UTAH CAMPUS, SALT LAKE CITY, UTAH

OKLAND CONSTRUCTION
GENERAL CONTRACTOR

UNIVERSITY OF UTAH
OWNER

CVE DIVISIONS **ELECTRICAL CONSTRUCTION & BIM MODELING, MULTIMEDIA, TELEDATA, SIGNAL & UTILITY**

PROJECT OVERVIEW

The Carolyn and Kem Gardner Commons now houses Social Science programs for the University of Utah and was completed in May 2018. This 5-level building includes:

- Classrooms and administration space
- Laboratory space with fume hoods
- Prefabricated temperature-controlled rooms
- Food service and dining space

SCOPE OF WORK

- Power distribution
- Lighting and lighting controls
- Interior panels transformers and metering
- Generator
- Automatic transfer switches
- Medium voltage transformers and cabling
- Fire alarm and two-way communication systems
- Exterior lighting and convenience power
- Security and CCTV
- Audio visual systems
- Teledata and DAS
- Wireless access points
- Kitchen equipment electrical connections
- Lightning protection



photos courtesy of Okland Construction

It has been an honor for CVE to work together with Okland Construction and the Gardner family. They are our well-respected peers and are pillars of the Utah community.



S&S Worldwide

NORTH LOGAN, UTAH

100,000
SQ FT

LUNDAHL BUILDING SYSTEMS
GENERAL CONTRACTOR

S&S SANSEI WORLDWIDE
OWNER

CVE DIVISIONS **LOGAN ELECTRICAL CONSTRUCTION, SIGNAL & UTILITY, TELEDATA, AVTEC**

PROJECT OVERVIEW

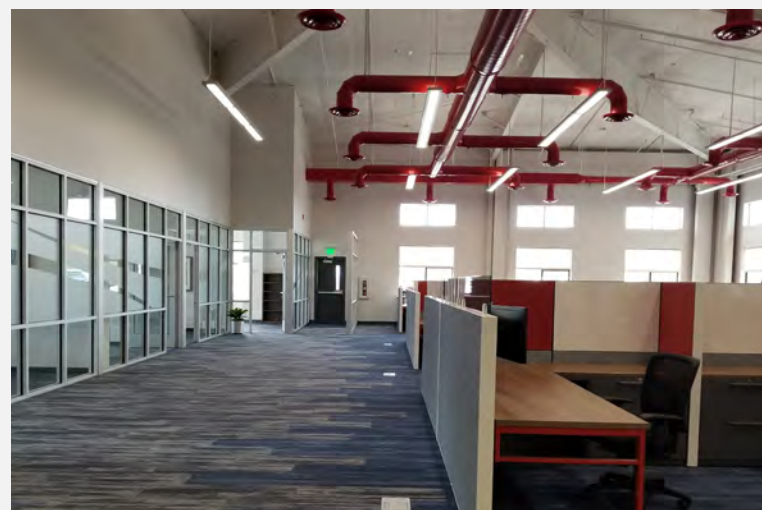
S&S Worldwide, the largest manufacturer of amusement rides (roller coasters) in the United States, has moved into their new corporate headquarters in North Logan, Utah.

Cache Valley Electric was selected to provide the electrical installation on this state-of-the-art facility. Working closely with the General Contractor, Lundahl Building Systems, Cache Valley Electric provided value engineering and cost control to bring this project in on schedule.

In addition to the electrical scope of work, CVE involved other divisions within CVE —Signal & Utility, Teledata, and Avtec.

SCOPE OF WORK

- Basic electrical construction of manufacturing facility and supporting administration area
- Primary medium voltage raceway
- Service and power distribution
- General building and site lighting
- Convenience power
- Equipment specific power
- Security and supporting wiring



Newrest

SALT LAKE CITY, UTAH

79,193 SQ FT

BIG-D
GENERAL CONTRACTOR

NEWREST
OWNER

CVE DIVISIONS **ELECTRICAL CONSTRUCTION**

PROJECT OVERVIEW

The Newrest project was a tenant improvement finish for warehousing, office space, and food preparation facilities in an existing building. Newrest prepares and provides the food and beverage services for the airline industry.

CVE worked with Big-D on this project and it progressed very smoothly and timely. By all measures, Newrest was a great success and we look forward to many more projects with Big-D in the future.

SCOPE OF WORK

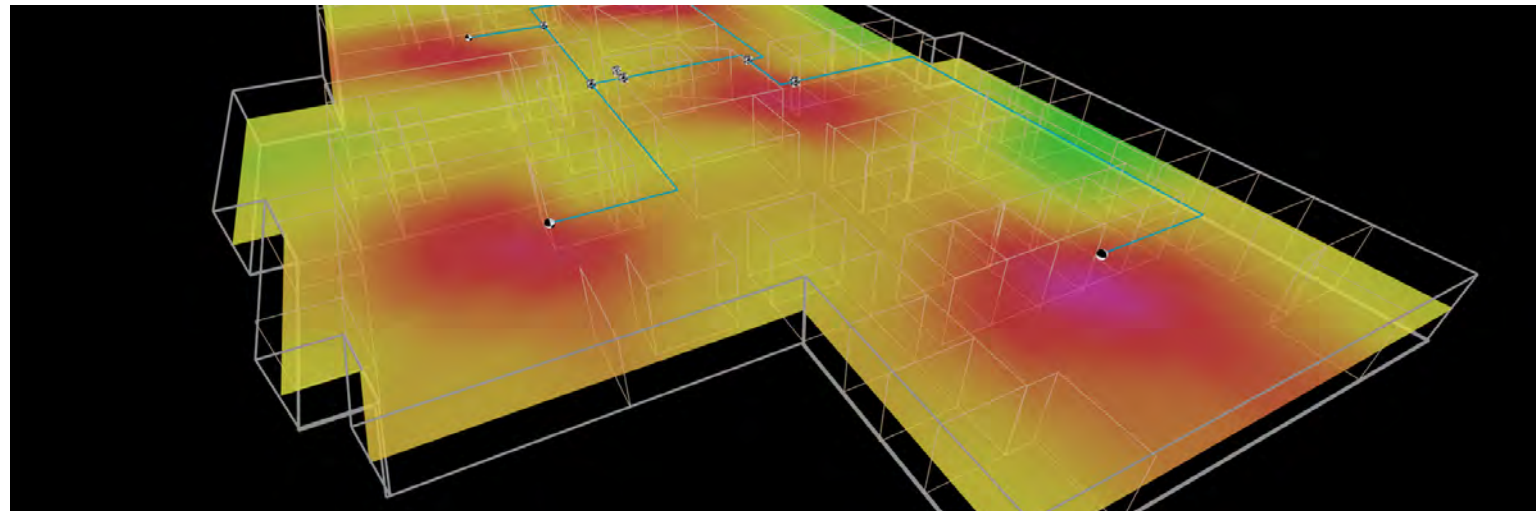
- Install new 1600Amp service with associated switchboards and panels
- Power and lighting throughout the building
- Power to owner-furnished commercial kitchen equipment: (2) 1,300 sq. foot freezers, 4,828 sq. foot holding fridge, dishwashing and cart washing equipment, etc.
- Access control/intrusion throughout the building
- Wiring for video surveillance system on 82 cameras
- Telephone and data distribution



Project Updates

UTAH STATE UNIVERSITY CLINICAL SERVICES BUILDING LOGAN, UT

CVE is proud to have successfully completed another project at Utah State University. This 105,000 square foot building was a design assist project led by R&O Construction. This building now serves both students at Utah State and members of the community, including those with Autism and other developmental disabilities, the aging and memory-challenged population, and those attending the Center for Disabilities. Go Aggies!



Distributed Antenna Systems

A NEW SERVICE FROM CACHE VALLEY ELECTRIC

WHAT IS DAS?

In-Building DAS (Distributed Antenna Systems) are simply a way of expanding wireless network connectivity and capacity into buildings. Bringing the signal source within close proximity of the user enables cell phones and public safety radios to communicate in places where normally the towers would not reach. In the case of the carriers, capacity may also be increased giving the user a much better experience.

WHAT CAN IT DO FOR ME?

In today's world where wireless connectivity has become an integrated part of our business and society, the need for DAS systems has never been greater. Increasing requirements for capacity and the ability to use a wireless device in any location continues to grow. Distributed Antenna Systems help fill these needs by improving data speeds and bringing cellular coverage into buildings either not served by nearby cell towers adequately or where towers may be at capacity. In the case of public safety, a DAS could make the difference in a critical situation and can help save lives.

WHY NOT A REPEATER?

Repeaters typically consist of an antenna located on the roof, a repeater or BDA located inside the building, and some number of antennas within the building all connected with coaxial cable. Repeater type systems are still viable and commonly deployed for public safety, although the trend from the carriers has been to move away from repeaters. Repeaters are simply repeating the service from the tower into

the building which does nothing to increase capacity and adds additional users connecting to the cell site. In the case of a cell site that may already be overloaded or at limit this results in speed drops, connection issues, etc. There is a place for repeaters in some instances, although it's not something typically recommended as a carrier solution in urban areas. Today the preferred method of connecting to a cellular DAS is the use of base stations, femtos, small cells, etc. which solve the capacity issue and truly create a good experience for the wireless user.

CVE is excited to announce an expanded offering through our Teledata & Multimedia Division. Lou Turner has joined us and is now heading up our DAS team. This group provides added value to both our new and existing customers.

THE CVE DAS TEAM OFFERS:

- Complete turnkey In-Building Distributed Antenna Systems
- Multi-Carrier and Public Safety Systems
- A guarantee that our systems will meet and exceed carrier requirements
- Extensive relationships with the carriers
- A team that is always on top of the latest technology and offerings
- In house In-Building engineering team including design, testing, maintenance and consulting services
- Certified with all of the major equipment manufacturers
- iBwave Certified design engineers

Recently Awarded Projects

ELECTRICAL CONSTRUCTION

Confidential Data Center, Utah County
Verizon Data Center, Salt Lake City
Databank Data Center
BioFire Service Facility T.I.
BioFire Kitchen & Bldg 400 Remodels
Confidential Data Center, New Mexico
Salt Lake International Airport North Concourse
Salt Lake International Airport South Concourse Baggage Handling
Spanish Fork Hospital
Schneider Electric Central Plant Controls Upgrade
IM Flash Technologies - multiple projects
Aligned Energy - multiple projects
Albany Engineered Composites - multiple projects

LOGAN OFFICE

Nucor Steel - JFE Galvanizing Line (Project Management) - Silao, Mexico
Eccles Theatrical Lighting - Logan, UT
Eccles Theatre Mechanical Upgrade - Logan, UT
Orbital ATK - Building M721 - Promontory, UT
Shawn Tech - Electrical Service Support - Marble, NC
Nucor Building Systems - Multiple Projects / Building Expansion - Brigham City, UT
Nucor Steel Marion - Reheat Furnace and Roll Mill - Marion, OH
Mississippi Silicon - Tapping Fume Fan MCC - Burnsville, MS
Nucor Steel - New Micro Mill - Sedalia, MO
Nucor Steel Gallatin - Ghent, KY
USU Fire Alarm Upgrade - Logan, UT
CMC Arizona - Looper Facility Embeds and Power Distribution - Mesa, AZ
Nucor Grating & Decking - Brigham City, UT
Western Metals Recycling - Plymouth, UT
Nucor Steel Utah - Plymouth, UT
Mill 1 Billet Shear Upgrade
Track Conveyors Upgrade
Shear 3 Drives Upgrade
Shipping Bay Overhead Cranes
Hotrail Feed Upgrade
Ongoing Maintenance Work
Nucor Steel Arizona - Kingman, AZ
Reheat Furnace Flame Safety PLC Upgrade
Material Handling Automation Upgrade
Vulcraft Utah - Brigham City, UT
New Solar Lab 15KV Power Distribution
New Solar Lab - 10 Acre/3 Megawatt Solar Array Installation

ARKANSAS OFFICE

Nucor Steel Cold Mill - Hickman, AR
35 Kv Distribution System
Water Treatment Underground Annealing Installation
Pickle Line Installation
Temper Mill Installation
Nucor Yamato Steel - Blytheville, AR
Caster Unload Hydraulic MCC Room
Caster Rounds Upgrade
South SVC Upgrade

PreCoat Metals Chiller Installation - Blytheville, AR
Prospect Steel Feeders for Auto Welder - Blytheville, AR
Ebner Cooling Bell Installation - Blytheville, AR
Andritz Metals Drive Cabinet Installation - Blytheville, AR
Atlas Tarping Sheds - Blytheville, AR
Carbrite Generator Installation - Osceola, AR

LINE DIVISION

Spanish Fork Substation - Rocky Mountain Power
Beaver Creek II Substation - MidAmerican Energy
Arbor Hills Substation - MidAmerican Energy
Kinport Substation - GE
Bountiful City Substation - Bountiful City
Blanding 4kV-12.5kV Conversion - Blanding City
Purgatory Flat Substation & Transmission - PacifiCorp
Smith and Mason Substation - NV Energy

HAWAII

Barbers Point Federal Project
Honouliuli Wwtp Phase 1A
BWS Ainakoa Pump Station
Adolescent Treatment And Healing Center
BYU Hawaii CAC & Admin Generator
Pacific Guardian Center FA Phase IV
Entrepreneur's Sandbox

SERVICE DIVISION

Conduent - Interior Remodels - Sandy, UT
Conduent - Data Center Expansion - Sandy, UT
United Parcel Service - Peak Village - SLC, UT

SIGNAL & UTILITY

I-15 Widening; SR-201 to 12300 S - UDOT
I-80; Parley's Summit to Jeremy Ranch - UDOT
US-91; SR-252 Intersection - UDOT
Angel St & Gordon Ave Signal, Layton - Layton City
I-15 Tech Corridor, Lehi to SR-92 - UDOT
US-91; 1000 No to So. Smithfield - UDOT
SR-68; I-215 Interchange Reconstr - UDOT
Lehi 1200 E 900 N - Lehi City
SLC Left Turn Signal Conversion - Salt Lake City Corp
I-80; SR-40 Silvercreek Jct. - UDOT
I-80 Tollgate; Ranch Exit - Overpass - UDOT
IDOT US-89; 12th St to Jct US-30 Montpelier - ID Trans Dept
SR-224; SR-248 to Bear Hollow - UDOT
UEJATC Redwood Road RMP - UEJATC
SR-282; U of U Roads - UDOT
SR-173; 5600 West to 4800 West - UDOT

Taxiway G Panel Replacement 54 1019 1680 - SLCDOA
WYDOT Dist 1 & 5 Signal Upgrades - WYDOT
Lone Peak Parkway Ext Phase II - Draper City
WYDOT I-25 & I-90 Logo Signs D1,2 & 4 - WYDOT
WYDOT Gillette & Jackson Streets - WYDOT
LHM Towers - LHM
UDOT Maint Contract; Install, Upgrade, Repair - UDOT
UDOT Maint of TC Systems - UDOT
IDOT 17th Street; Holmes to Woodruff 13585 & 20086 - ID Trans Dept
SF to Santaquin Pipeline So Fields - Reach 1
SLCIA DP-18 Airside Civil Phs 1 - SLCDOA
Pioneer Crossing / I-15 Int. Ramp Improvements - UDOT
Prospector Ave; Bonanza Dr to Sidewinder, PC - UDOT
Provo 100 No Univ Ave - First Digital
Legrand Street Reconstruction - Legrand Johnson
Adobe Signal - Phs 2 Parking Garage & Site - Adobe
6200 S. Road Widening (3200 W) - City of Taylorsville
UofU Wasatch Dr & Student Life Road
SLC - University of Utah
Cold Creek & Hillfield Road, Layton - Layton City
HAFB 6th Street Signal - Army Corp of Eng
Lehi Ashton & Triumph - Lehi City
So Jordan Kestrel Rise & So Jordan Pkwy - South Jordan City
UTA Tiger, Ogden Grant Ave 22nd - UTA
No. Ogden 2550 No Washington Blvd Signal - North Ogden City
SLCIA Terminal Redevelopment Prgm - SLCDOA
Apron Paving - gA
SR-39 Emerg Pavement Rehab - UDOT
Provo Lakeveiw Parkway; Mike Jense to Center - Provo City
Kilby Rd Roundabout, Park City - UDOT

AVTEC

Ancestry - San Francisco Office - Security Project
Avista Corporation
Medeco Substation - Security Project
Cabinet Gorge - Entrance Security Project
Deer Park - Video Surveillance Project
Dollar Road - Video Surveillance Project

Dominion Energy

SLCC - Security Upgrades
Evanston Service Center - Security Upgrades
Eakin Station - Security Upgrades
Fidlar Station - Security Upgrades

Flexential

Security Controls Projects:
Las Vegas, NV
Portland, OR
Salt Lake City, UT

GAF

New Columbia - Video Surveillance Project

IPS

Project Husky - SLC
Park City Municipal
Public Works - Security Upgrades
Public Utility District No. 1 of Chelan County

BES - CIP Low Impact Hydro Access Control Project

Rocky Mountain Power

Jim Bridger - System Upgrades
Dave Johnston - System Expansion

PacifiCorp

Merwin Substation - Security
Chehalis - Security Upgrades

S-Power

Big Sky North Project - Lancaster
Salt Lake City Department of Airports

Terminal Redevelopment - North Concourse
Concourse Paging Expansion Project

Utah State University

Life Sciences Building - Security Project

Western Governor's University

North Carolina - Security Project
Tower 3 - Security Project
SLC - Video Surveillance Project

CVE TECHNOLOGIES

UTAH:

Adobe
Savage Services
Nicholas and Company
Provo School District
Cache School District
Master Control
Ultradent
State of Utah ITS

OREGON:

Clackamas ESD
City of Milwaukie
Standard Insurance
Nike

DALLAS:

SunRun
Equinix (US / Australia)
Arrow Electronics

TELEDATA/MULTIMEDIA

BYU Harmon Building - Provo, UT
Traeger Expantion - SLC, UT
Biofire Warehouse - SLC, UT
Doterra Medica Building - Pleasant Grove, UT
Goldman Sachs - Draper, UT
Saratoga Springs Middle School - Saratoga Springs, UT
Sugar House Park Ave Development - Sugar House, UT
Smith's Marketplace - Las Vegas, NV
Sutter Health - Murray, UT
SLCC - Security Upgrades
IHC BioRepository - SLC, UT
Vail Resorts Canyons - Park City, UT
Sheraton Waikiki - O'ahu, HI
Hawaii State Hospital - O'ahu, HI
SLC Airport Verizon DAS - SLC, UT
Mountain America HQ DAS - Sandy, UT
Phillips State Prison DAS - Buford, GA
UofU DAS - SLC, UT

LOGAN CORPORATE OFFICE

875 North 1000 West
Logan, UT 84321
435-752-6405

SALT LAKE CITY OFFICE

1338 South Gustin Road
Salt Lake City, UT 84104
801-908-6666

ARKANSAS OFFICE

5590 E. State Hwy. 137
Blytheville, AR 72315
870-824-6670

OREGON OFFICE

12550 SW 68th Ave.
Portland, Oregon 97223
503-431-6600

TEXAS OFFICE

2370 West Airfield Dr., Ste 200
Dallas, TX 75261
469-867-5309

HAWAII OFFICE

733 Bishop St., Ste 2170
Honolulu, HI 96813
808-354-0080

WWW.CVE.COM



CACHE VALLEY ELECTRIC

Cache Valley Electric
875 North 1000 West
Logan, UT 84321

PRST STD
U.S. POSTAGE
PAID
SLC, UT
PERMIT
NO 6

Return Service
Requested

Our People are Our Power

CVE EMPLOYEE RECOGNITION BANQUET

The CVE 16th Annual Employee Recognition Banquet was held on April 21st, 2018. Our recognition program was started in 2003 to honor employees who achieved 10+ years of service. Employees receive their first award after their 10 year anniversary, then at each additional 5 year milestone. Thank you to the employees listed below for your 20+ years of dedication to CVE.

20 YEAR SERVICE AWARDS:

- Steve Croft (Logan)
- Steve Gertino (ECD)
- Mark Montgomery (Logan)
- Mike Neilson (ECD)
- Pete Olson (SUD)
- Nate Wickizer (SLC)

25 YEAR SERVICE AWARDS:

- Jeff Jensen (Service)
- Scott Jensen (ECD)



30 YEAR SERVICE AWARD:
Myron Perschon (Teledata Utah) with Jim Laub



35 YEAR SERVICE AWARD:
Willie Halaufia (Logan) with Jim Laub

IBEW SERVICE

Congratulations to the following CVE employees for their years of service with the IBEW:

20 YEARS

- Michael Heaps
- Aaron Mair
- Steven Martinez
- Eric Rose
- Kendall Woods

25 YEARS

- Bruce Bradshaw
- Steven Grant
- John Krstyen
- Donna Powell
- Jeffrey Schulz

40 YEARS

- Carl Hipwell

